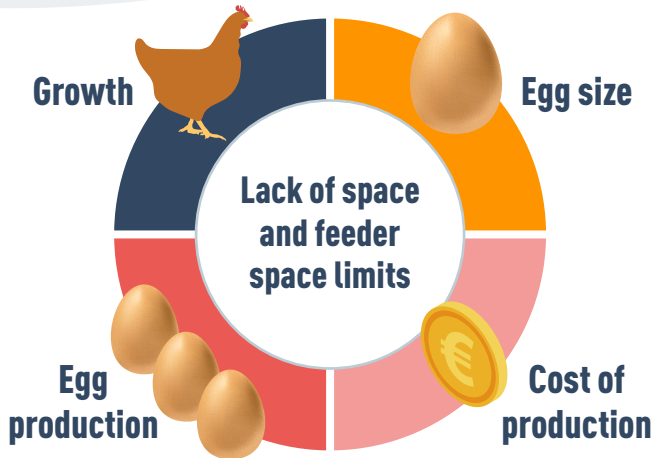


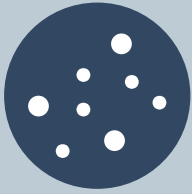


Competition limits feed success

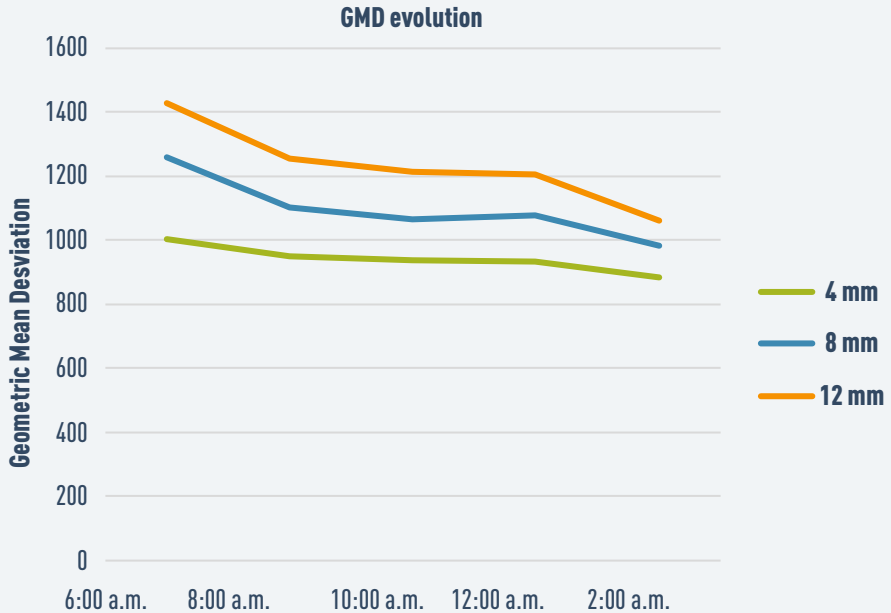
+ The success of the feed formulation is limited by the equipment.

+ Layer hens at any age **compete** with the sisters for the space and feed.





Select feed intake



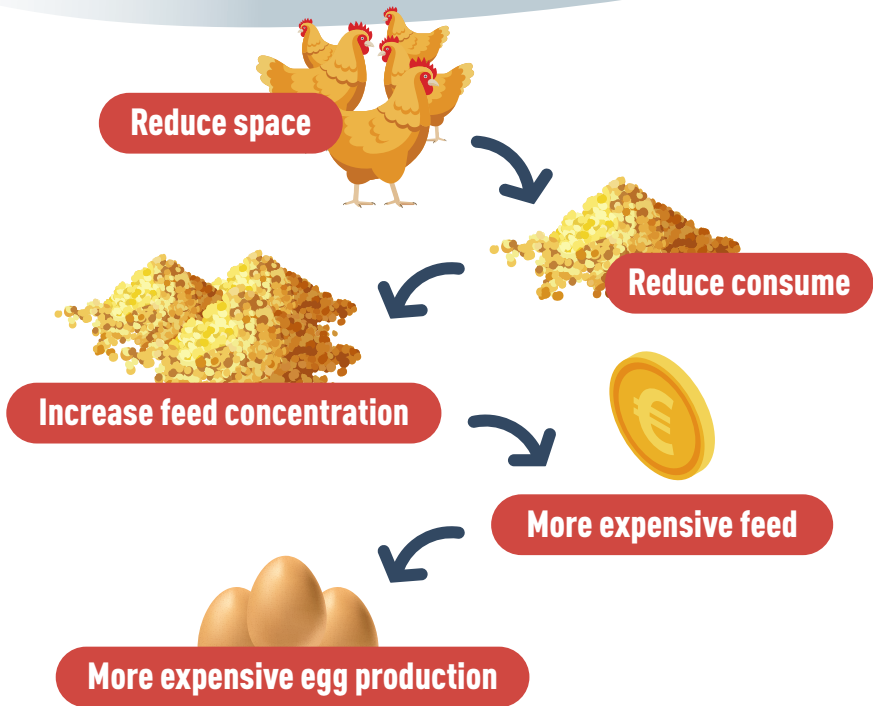
Adapted from Herrera et al Poultry Science 97, 2018



Birds select always big particles!!



Competition limits nutrient intake and makes production more expensive





3 easy steps to reduce feed competition



Step 1

Provide 2.5 cm per bird feeder space on arrival.



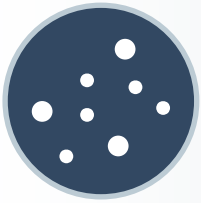
Step 2

After week 3 increase feeder space to 5 cm per bird.

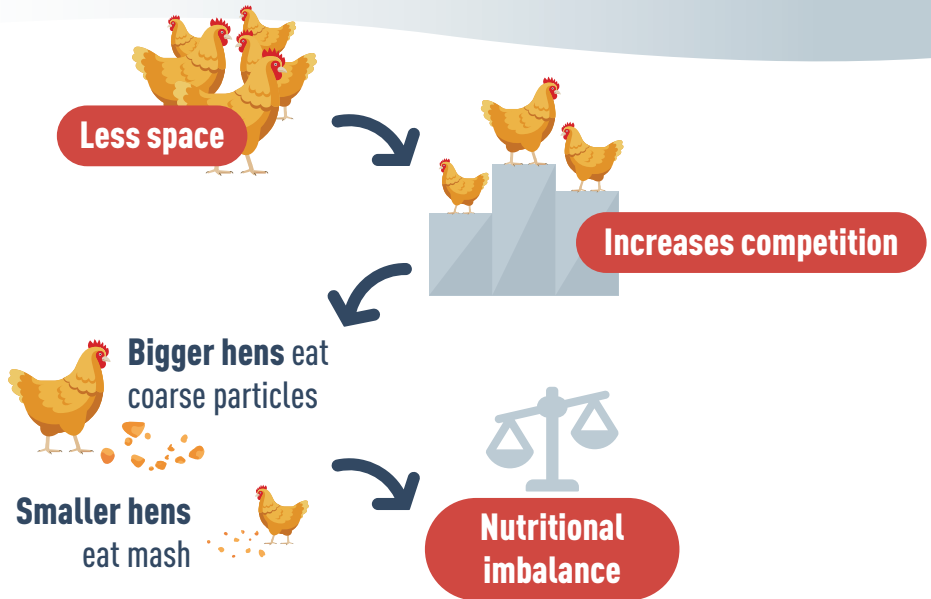


Step 3

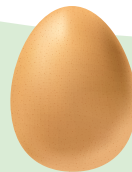
In production 10 cm per bird avoids any feed competition.



Feed competition excess brings feed selection



Egg laying is maintained but
there is a drop in egg weight.



Bibliography



- Management guide H&N International 2019.
- Herrera et al Poultry Science 97, 2018.