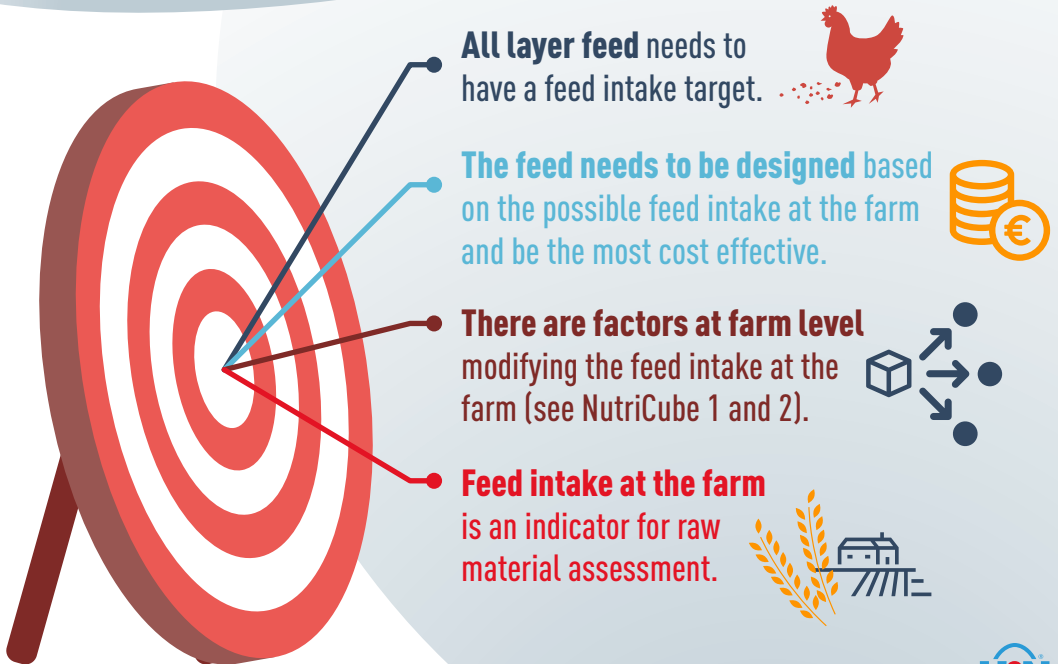




Target feed intake

Feed should have a target intake





Steps in setting the diet in production:

...the **body weight of the birds**
– it defines the energy needs.



...what the **egg size is** and therefore
make the calculation of egg mass –
it defines the amino acids needs.



...the **body weight at week 5-6 of age**
– it defines the size of the carcass we
might have in production.



...the **possible scenarios**
for different feed intake.



...what is the **most cost
effective scenario**.





Evaluation of the target feed intake



The lowest feed intake
isn't always the
cheapest production.



The lowest FCR isn't
always the most
profitable production.



Due to farm conditions,
we might not have the
choice to chose the
cheapest feed.



ME _n	2970	2835	2715	
Feed intake	105	110	115	
	mg/hen/day			
Dig. lysine	800	0,762	0,727	0,696
Dig. methionine	400	0,381	0,364	0,348
Dig. Met + Cys	720	0,686	0,655	0,626
Dig. Threonine	560	0,533	0,509	0,487
Di. Tryptophane	176	0,168	0,160	0,153
Cost (\$)	402	370	337	
Cost per hen (\$)	0,0422	0,0407	0,0387	



Making the diet specification



All the nutrients need to be proportionally calculated



Energy, amino acids, minerals...
all have to be proportional to
the calculated daily needs

	Need/bird/day	100	105	110
ME	302 kcal	3020	2876	2745
D Lys	810 gr	0,810	0,771	0,736
D Met	405 gr	0,405	0,386	0,368
D M+C	729 gr	0,729	0,694	0,663
D Thr	567 gr	0,567	0,540	0,515
D Trp	178 gr	0,178	0,170	0,162
Ca	4,1 gr	4,10	3,90	3,73
Av P	420 mg	0,42	0,40	0,38



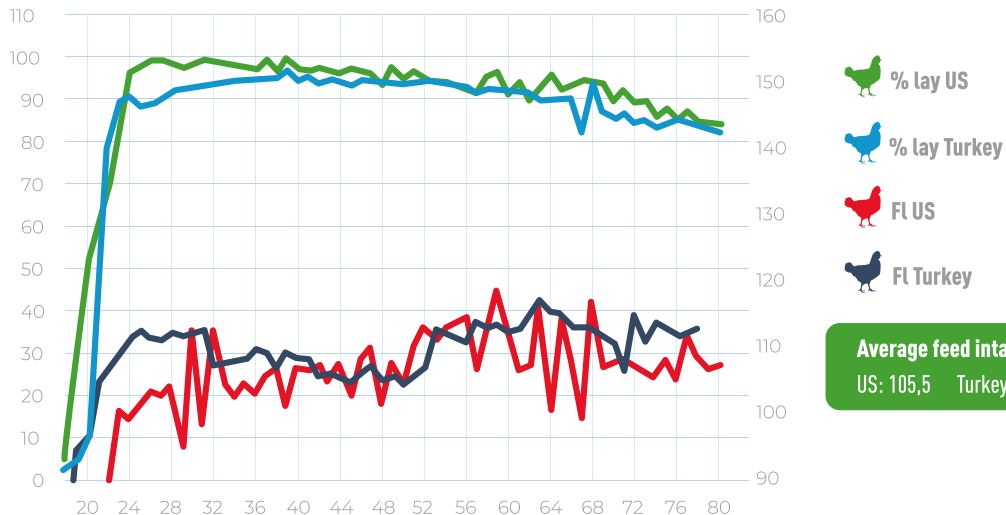
Same bird, different feed intake



Same good performance
of Nick chick



Different target
feed intake



 % lay US

 % lay Turkey

 FI US

 FI Turkey

Average feed intake:

US: 105,5 Turkey: 109,3

Bibliography



- Leeson S., Summers J., (1997) Commercial Poultry Nutrition, Second Edition, 143-205, Guelph University, Canada.
- H&N Management guide 2019.
- Nutrition needs poultry FEDNA 2018.