



INTERNATIONAL

The key to your profit!



H&N Parent Stock

Dr. David Caverro Pintado

H&N Online Distributor Meeting, 24 November 2021

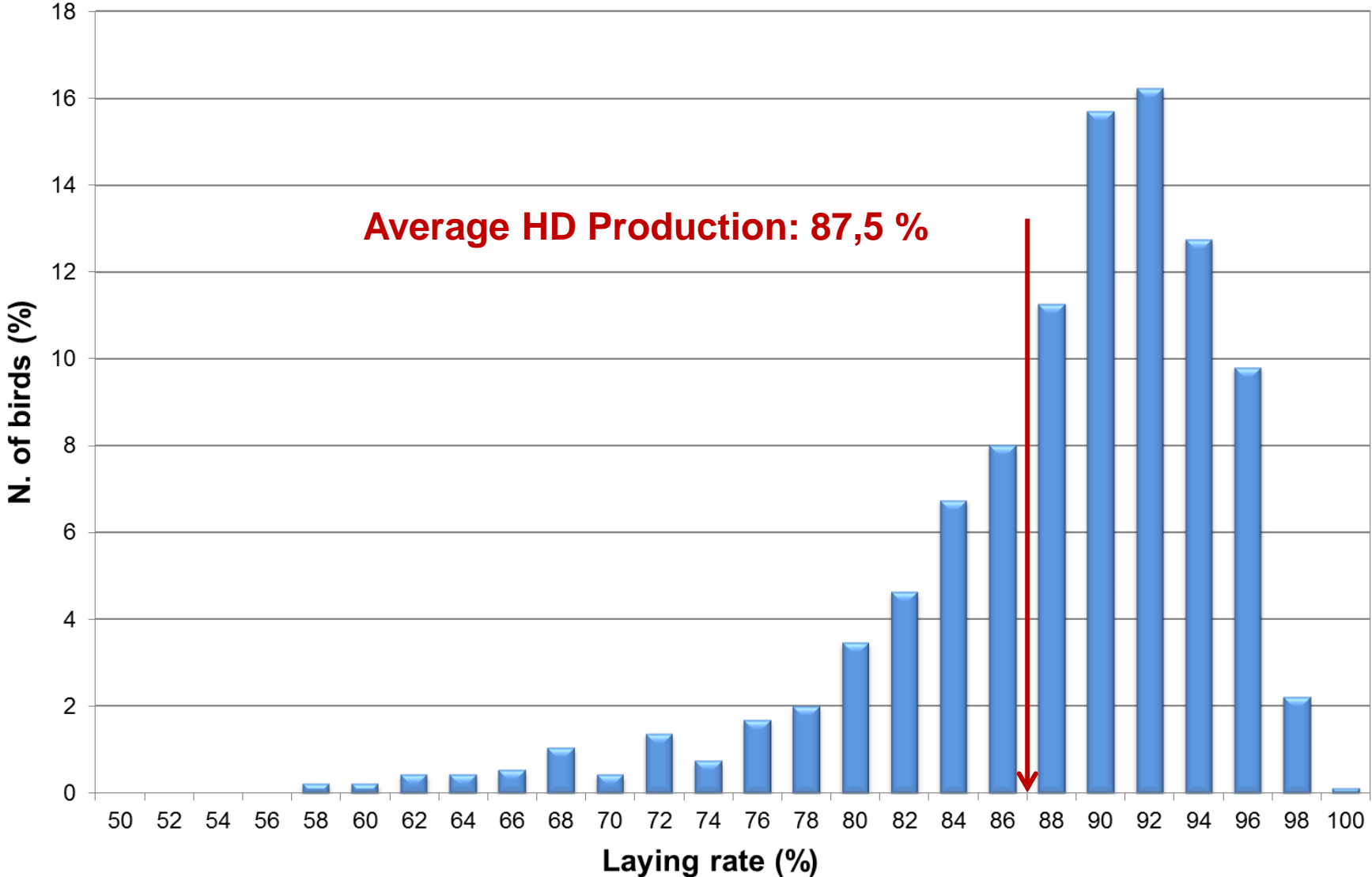
Breeding Goal for reproductive traits

Hatchery Goal:

Maximise the number of first quality chicks per PS



Cumulative Laying Rate – 574 d **White egg pure-line**



Influence of hairline-crack eggs

Eggs with **hair-cracks**:

- ✓ Increased bacterial exposure and weight loss
- ✓ **Lower hatchability 56.4% vs. 80.9%** (Barnett et al., 2004)

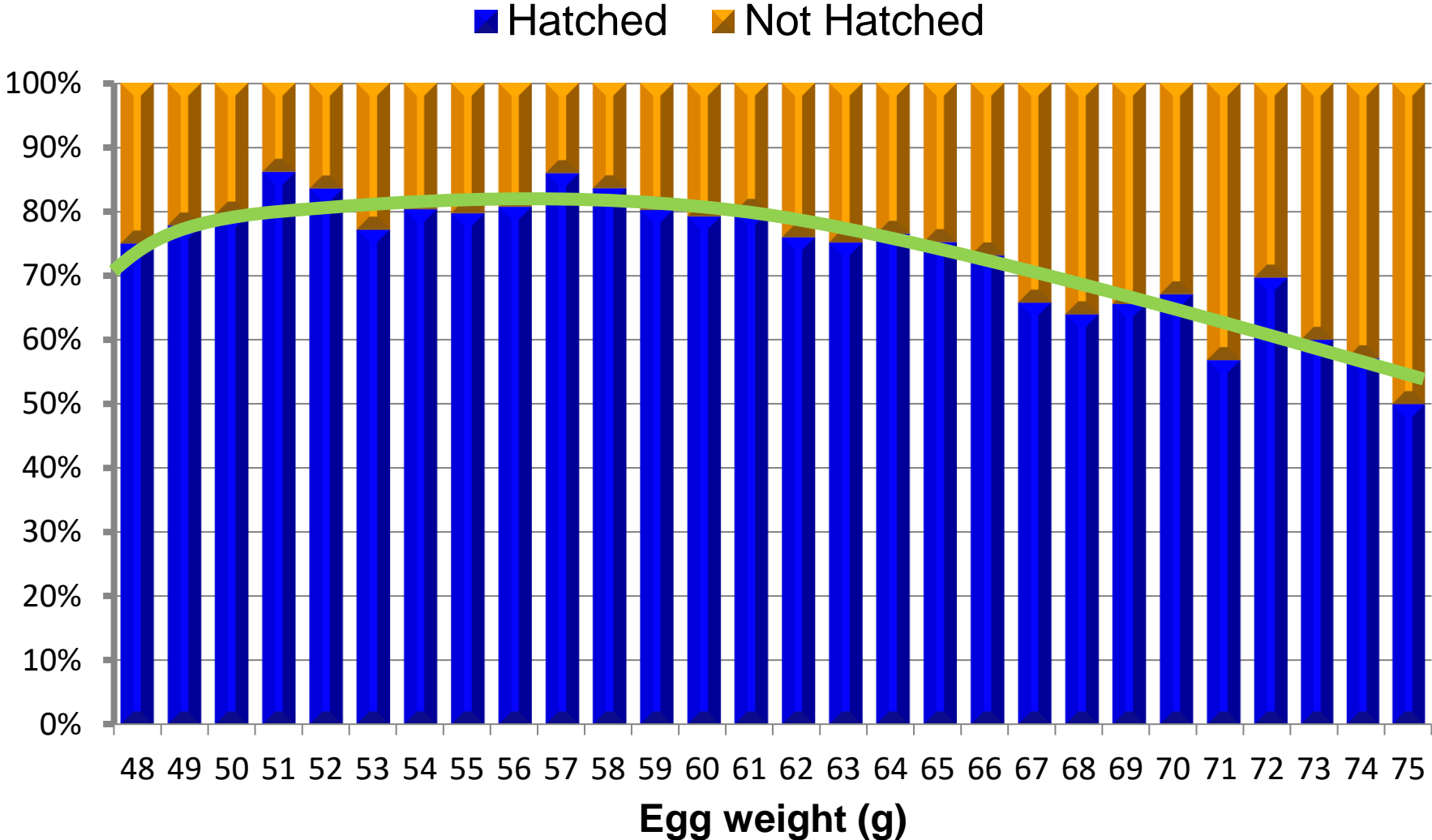


Own Trials (Brown egg pure-line)	Line 1		Line 2	
	Normal	Crack	Normal	Crack
% Death Embryos until 18d	6.0	12.5	7.5	32.0
% Egg weight loss until 15d	8.8	10.8	9.8	12.7
% Hatch of transfered eggs	77.7	57.0	85.1	63.2

Hatchability test



Hatchability of different egg weights

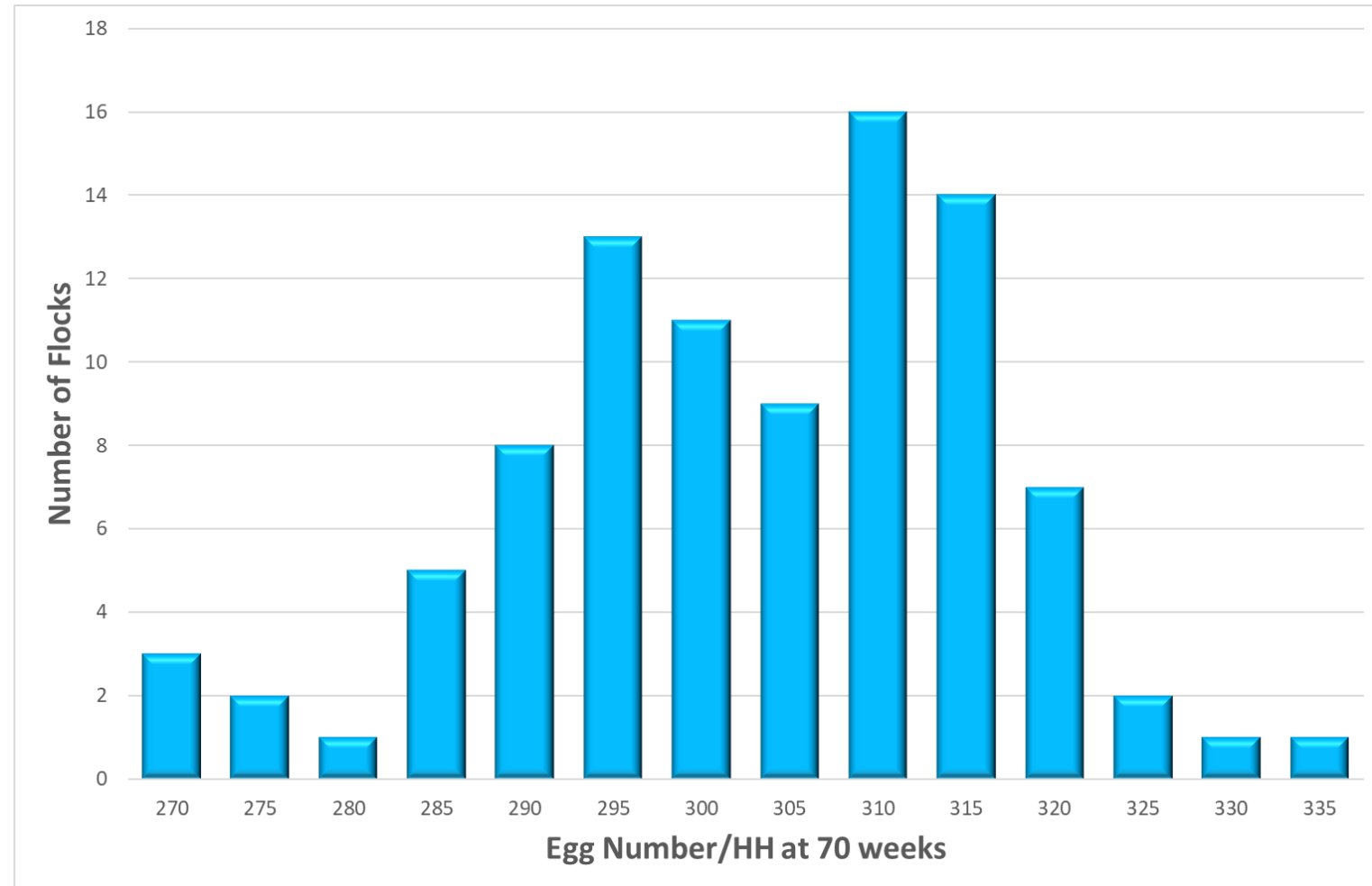


Parent Stock Flock Data

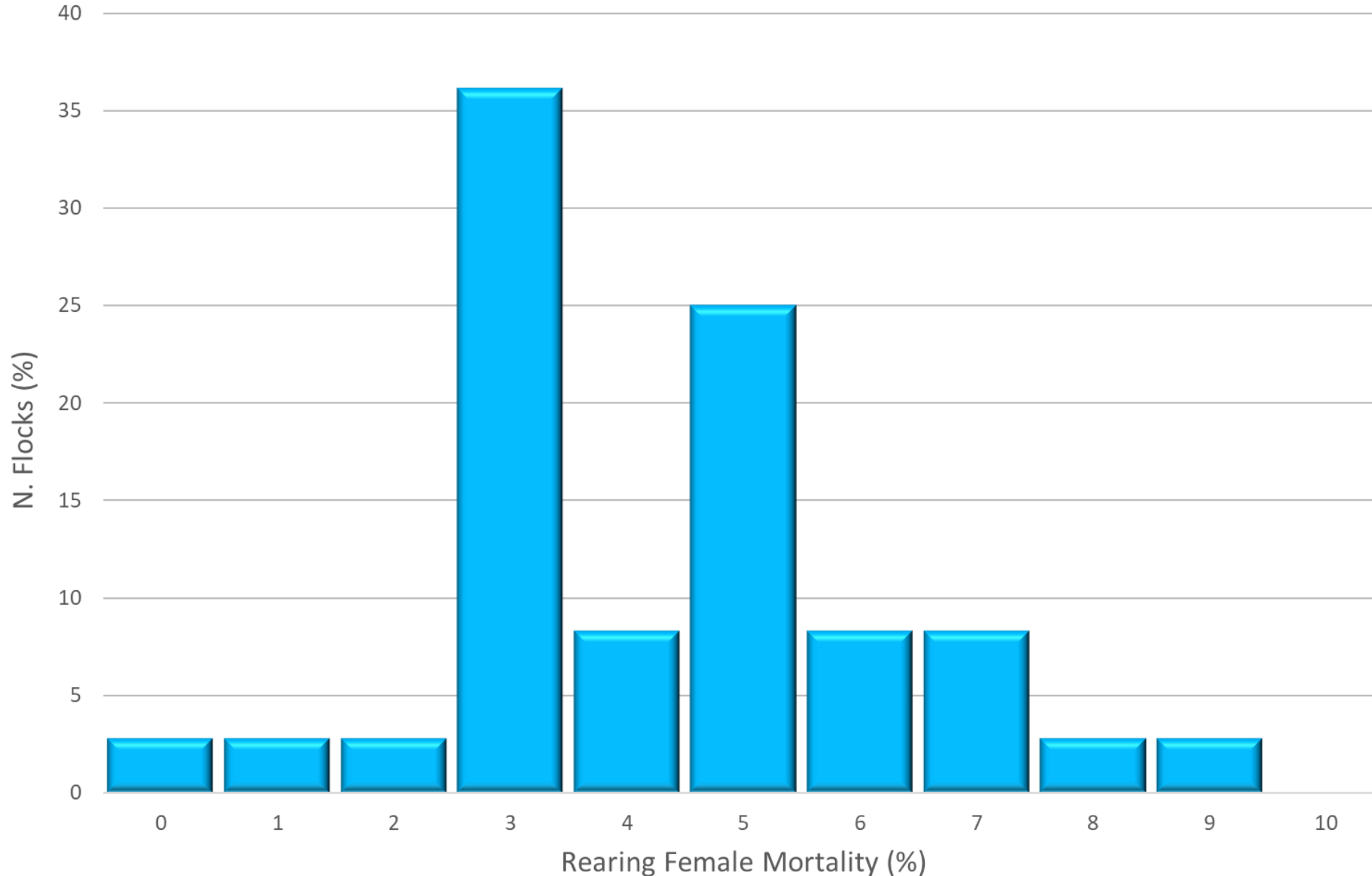


PS- Flock Data (2017-2020) – 17 Countries

Country	N. Flocks
Argentina	13
Bolivia	1
Canada	3
Colombia	12
Ecuador	6
France	7
Guatemala	8
Morocco	1
Netherlands	55
Philippines	1
Portugal	10
Russia	6
Sri Lanka	3
Switzerland	14
UK	6
Venezuela	1
Zimbabwe	2
Total	149

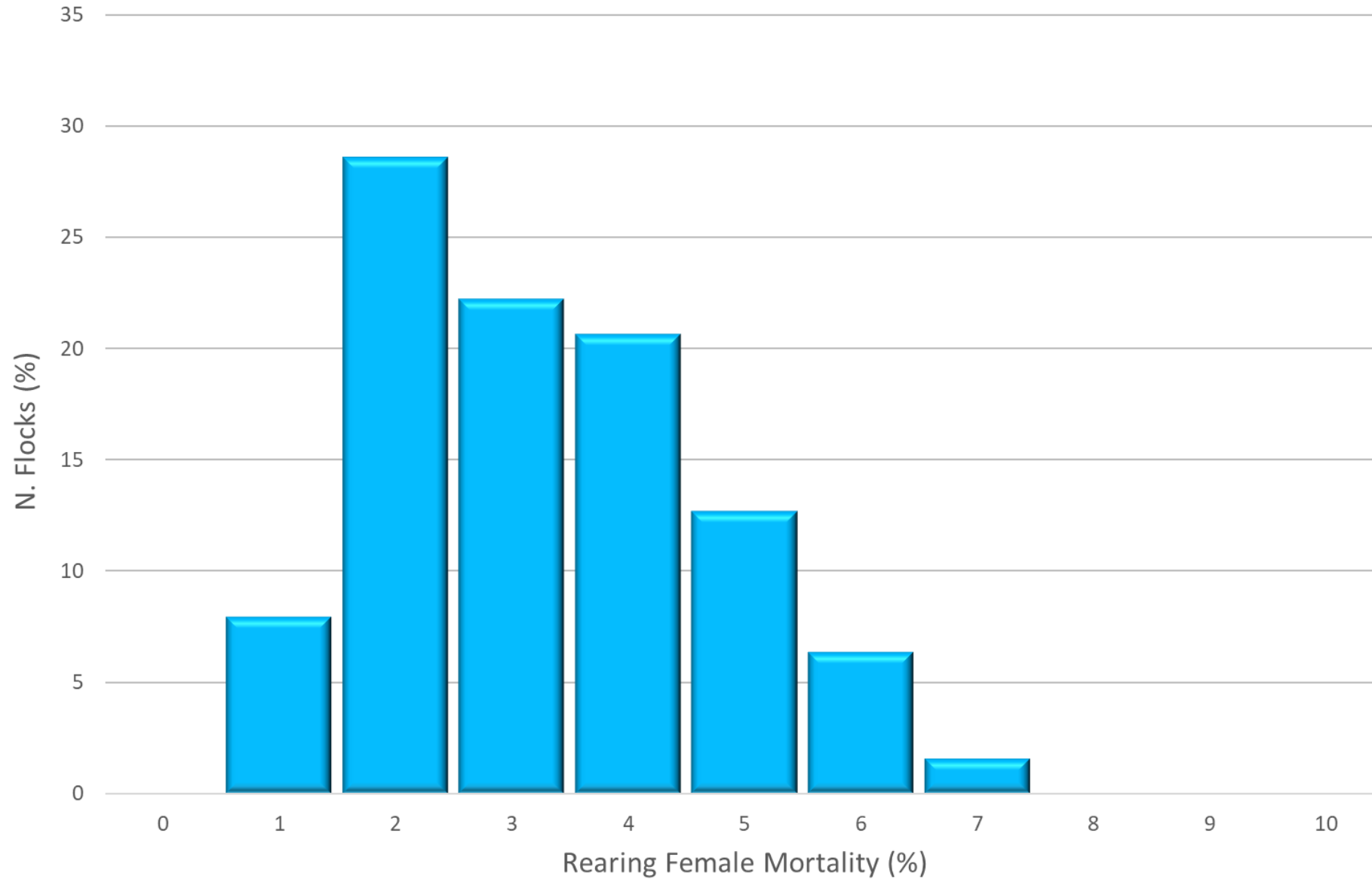


Rearing Female Mortality - White PS



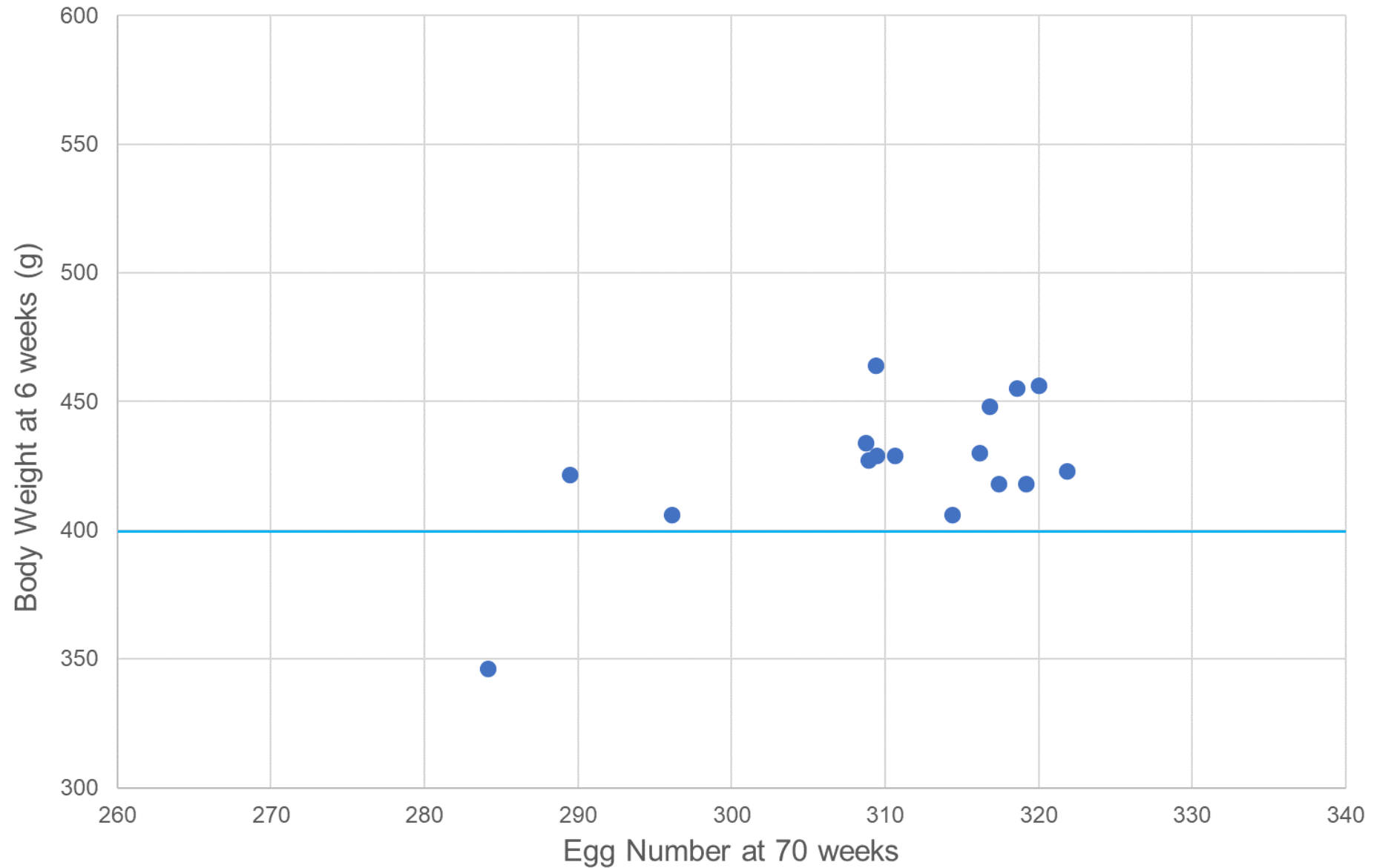
Avg: 4.3%

Rearing Female Mortality - **Brown PS**

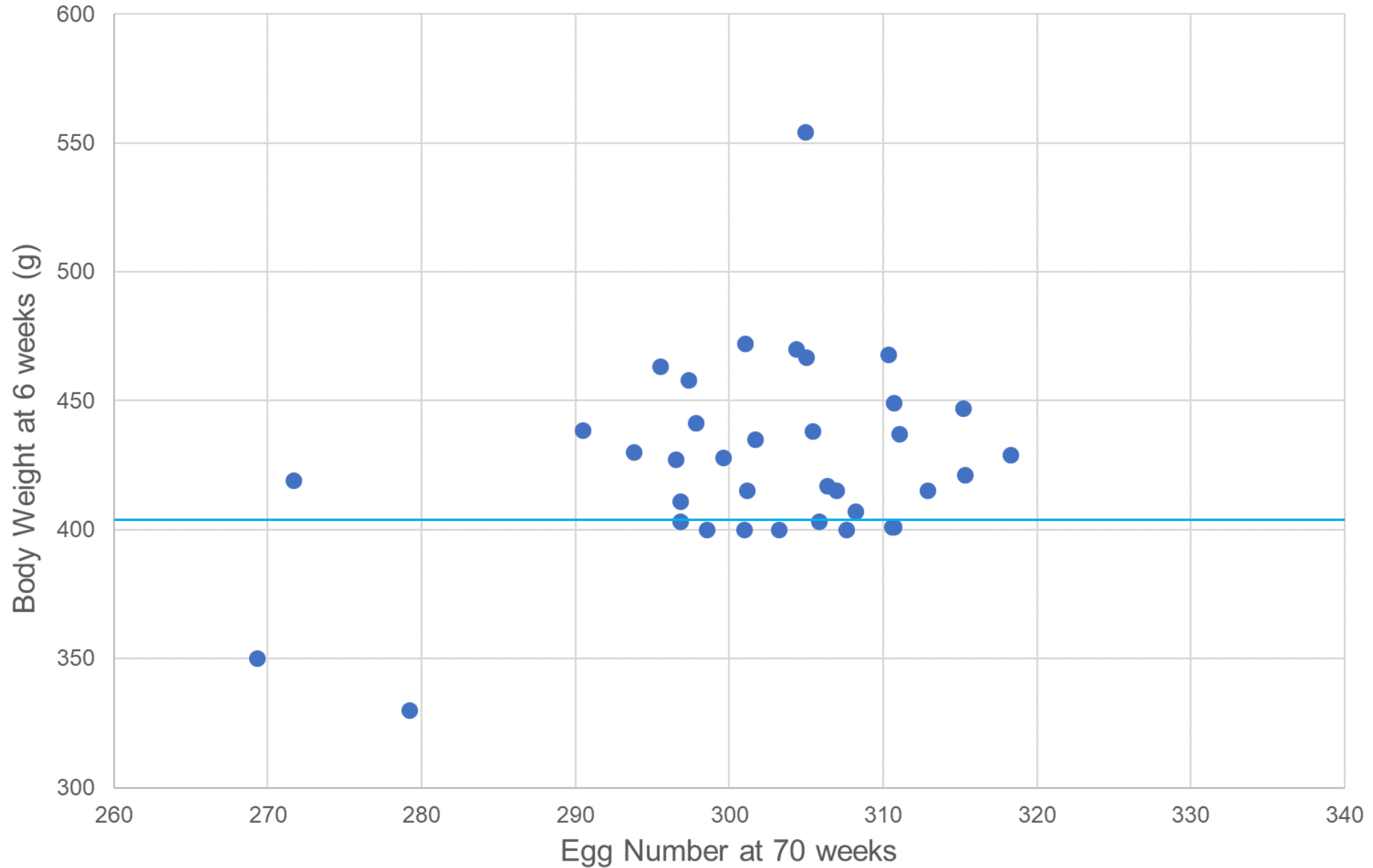


Avg: 3.3%

Body Weight in rearing – White PS



Body Weight in rearing – **Brown PS**



Rearing Body Weight

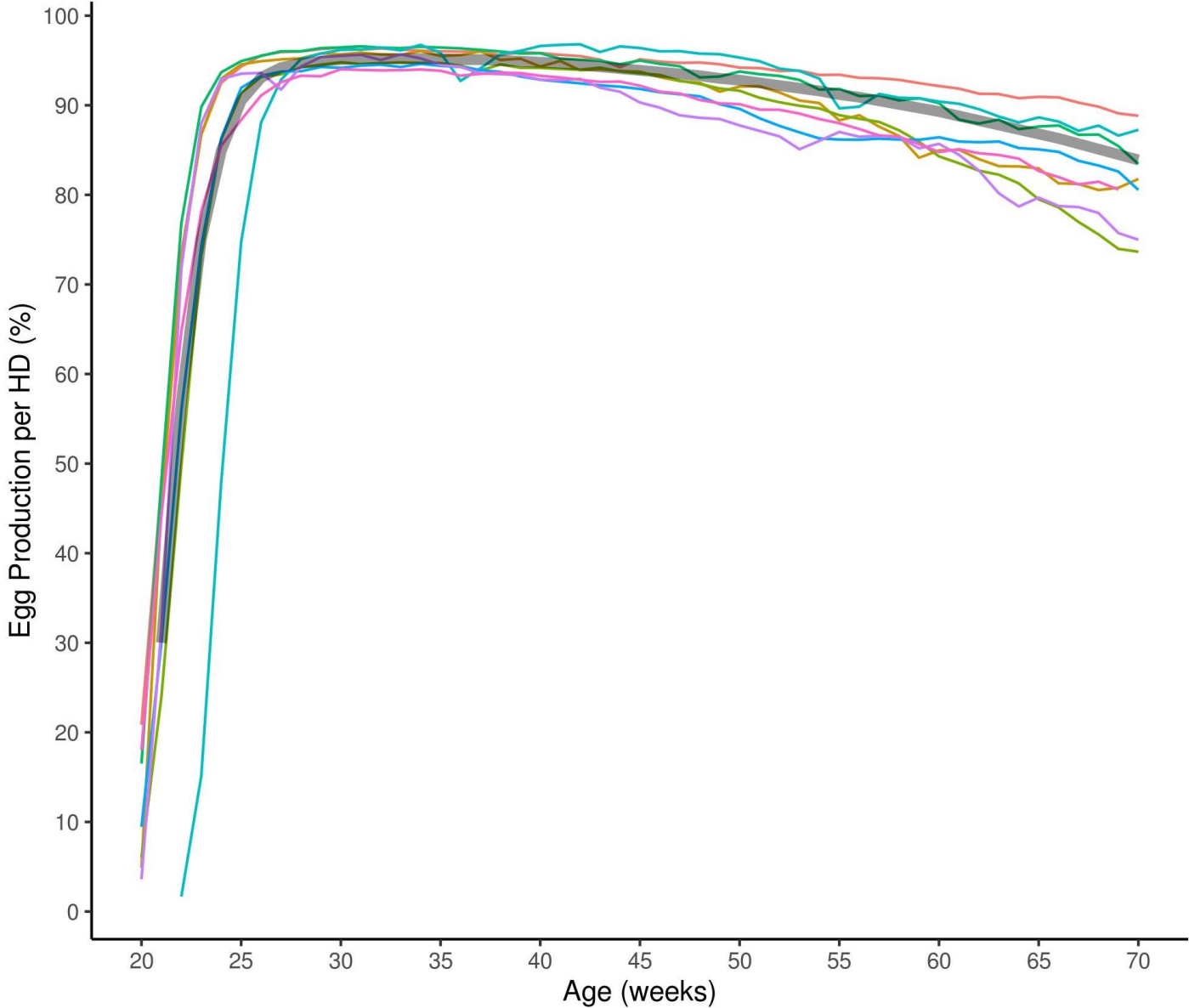


White PS	Avg.	Std.
BW 6w (g)	420	403
BW 12w (g)	923	871
BW 20w (g)	1,359	1,350

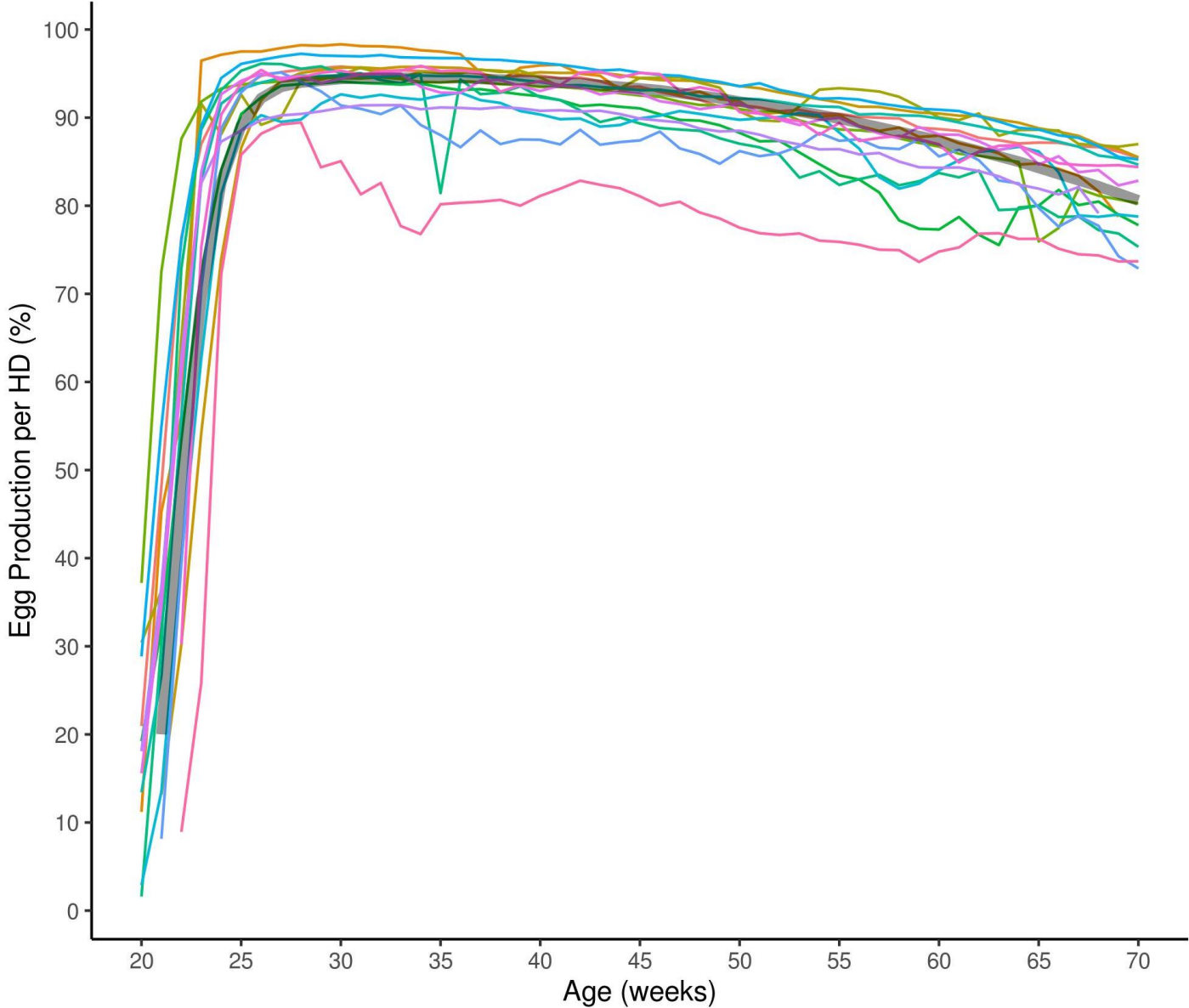


Brown PS	Avg.	Std.
BW 6w (g)	425	414
BW 12w (g)	998	974
BW 20w (g)	1,660	1,618

HD Production – Countries **White PS**

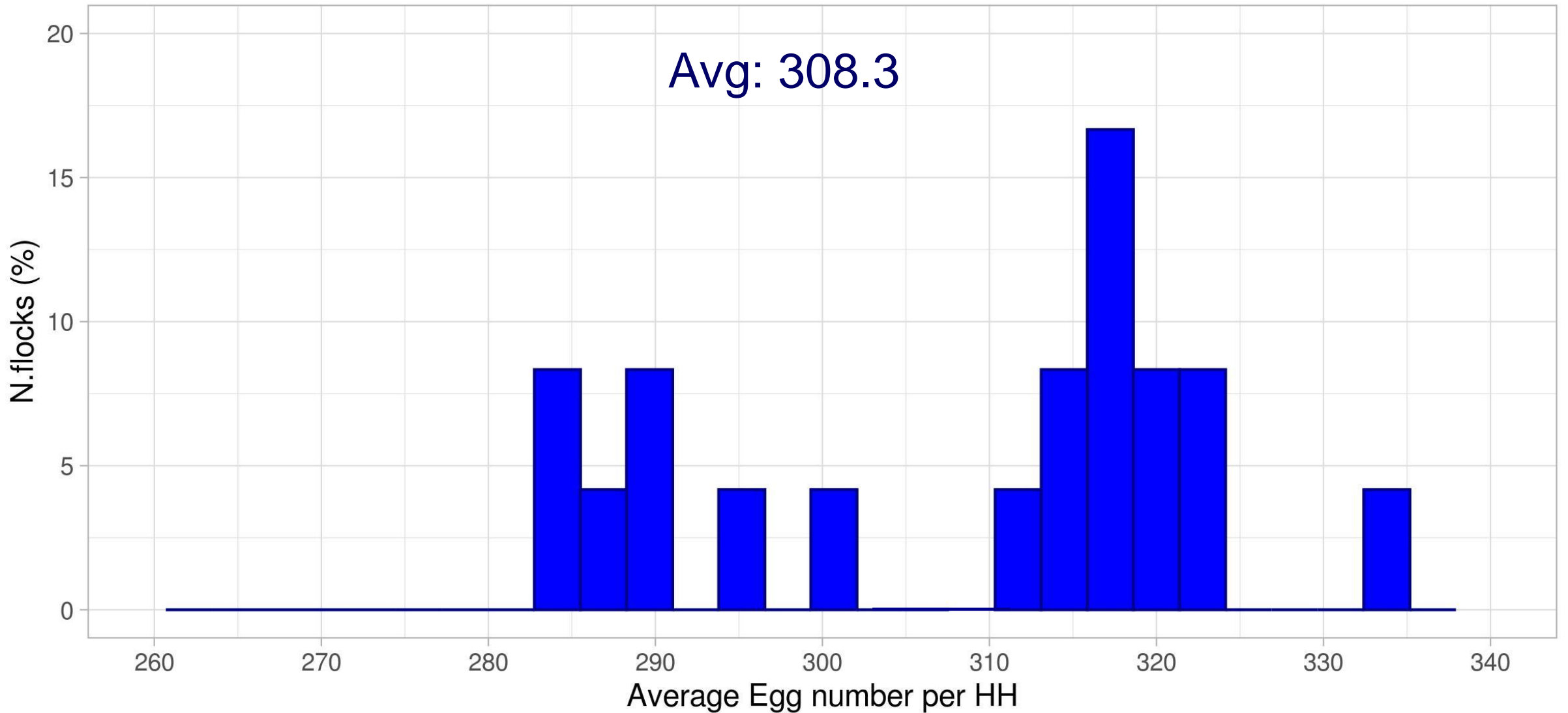


HD Production – Countries **Brown PS**



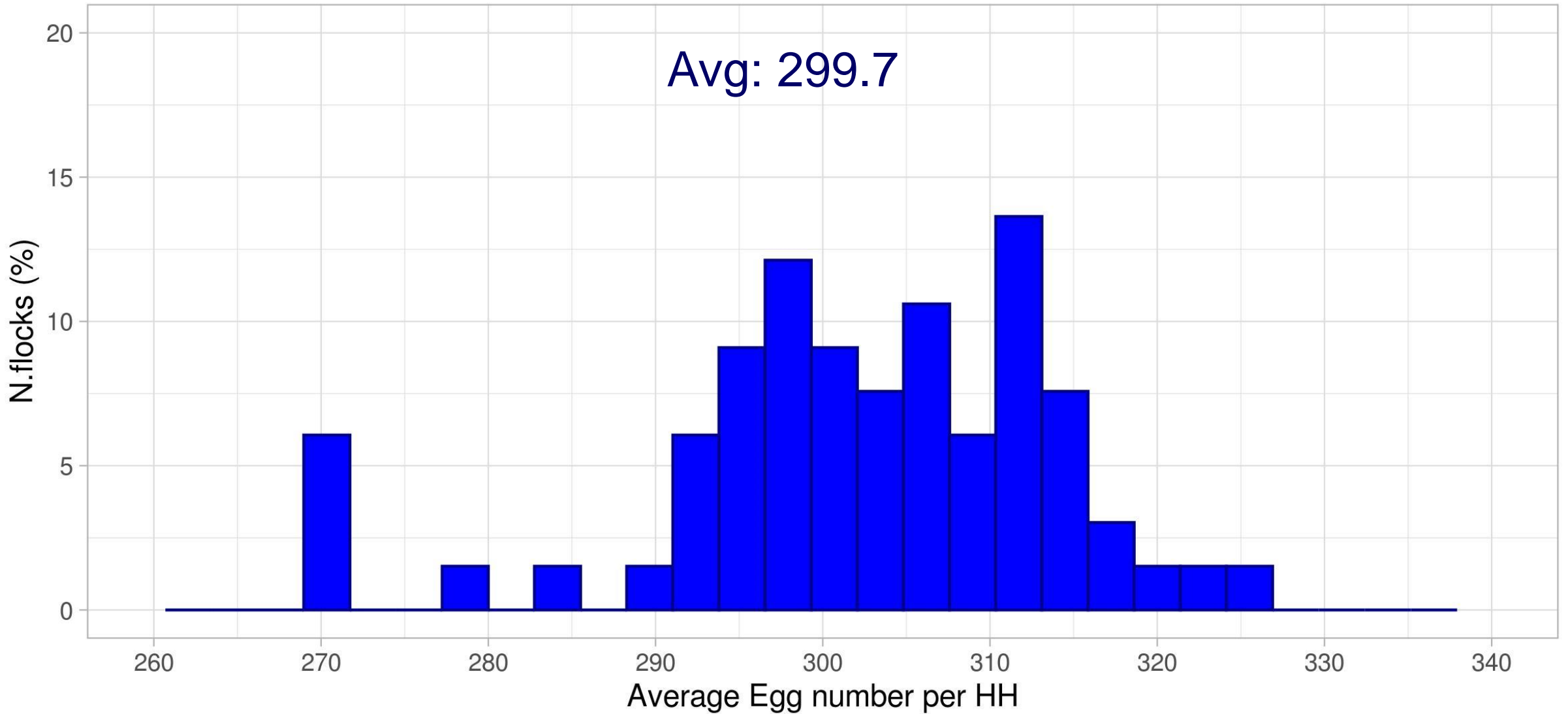
Egg Number/HH - White PS

Egg number per HH by 70 weeks



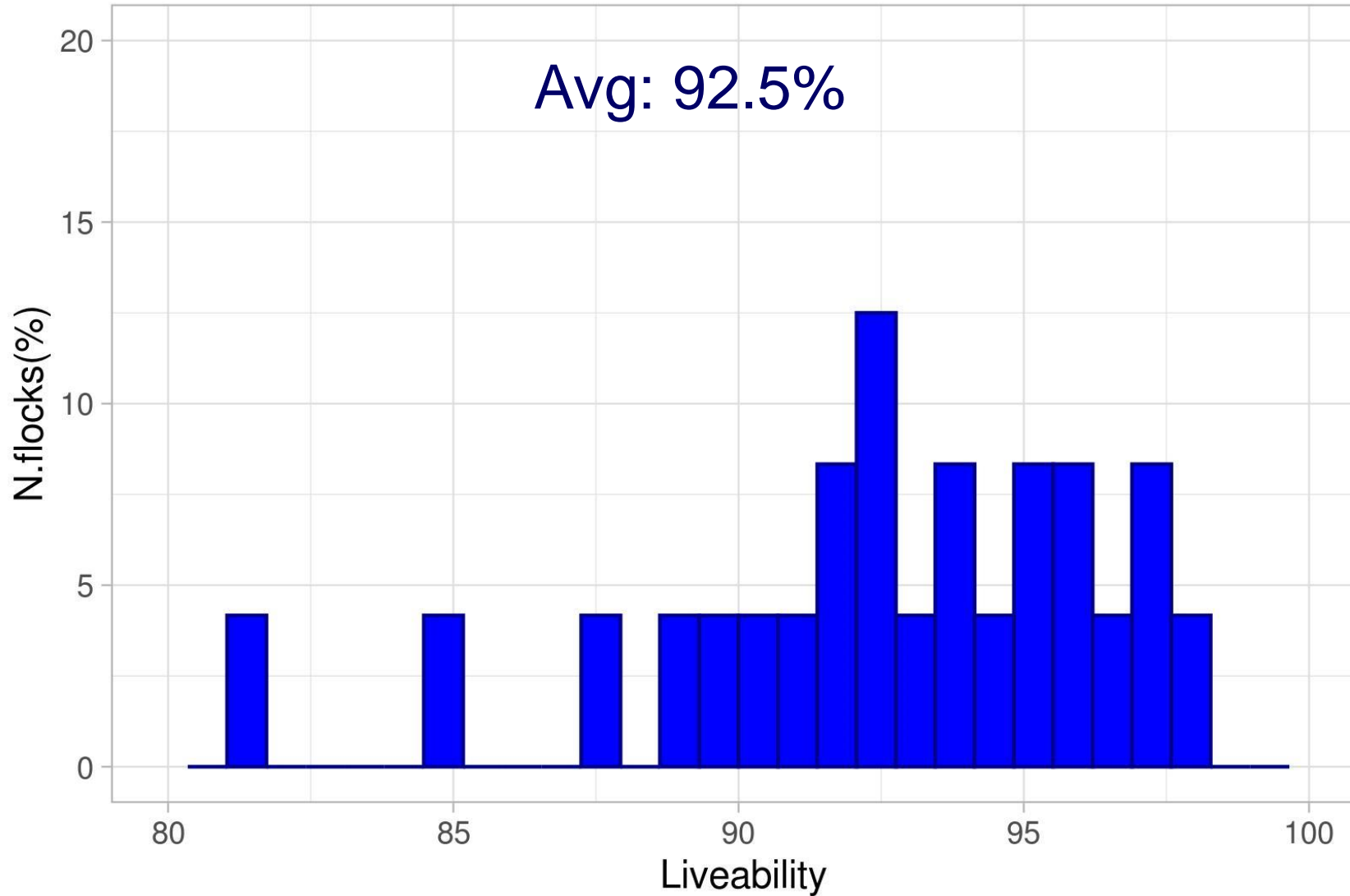
Egg Number/HH - **Brown PS**

Egg number per HH by 70 weeks



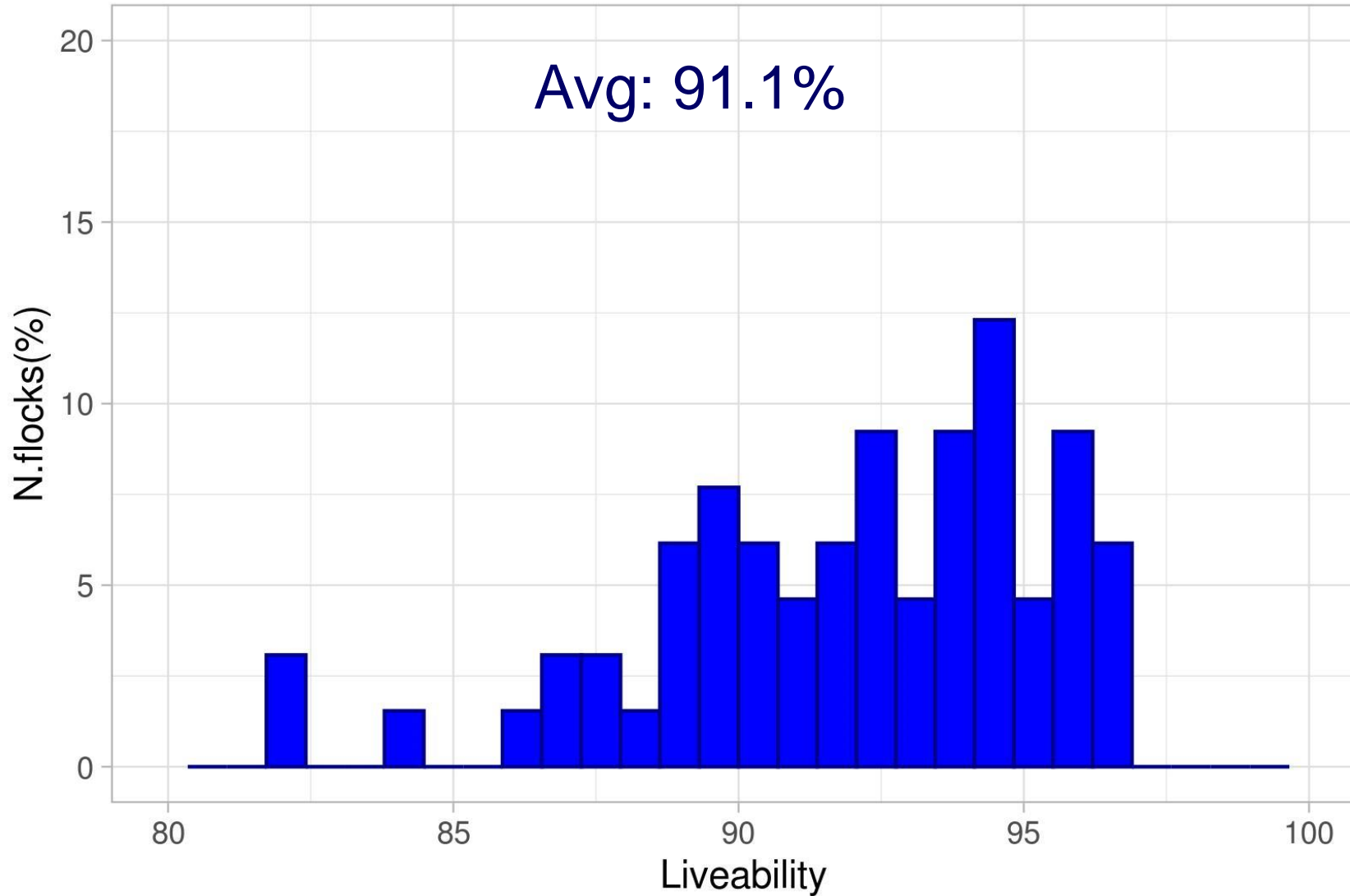
Liveability - White PS

Liveability by 70 weeks



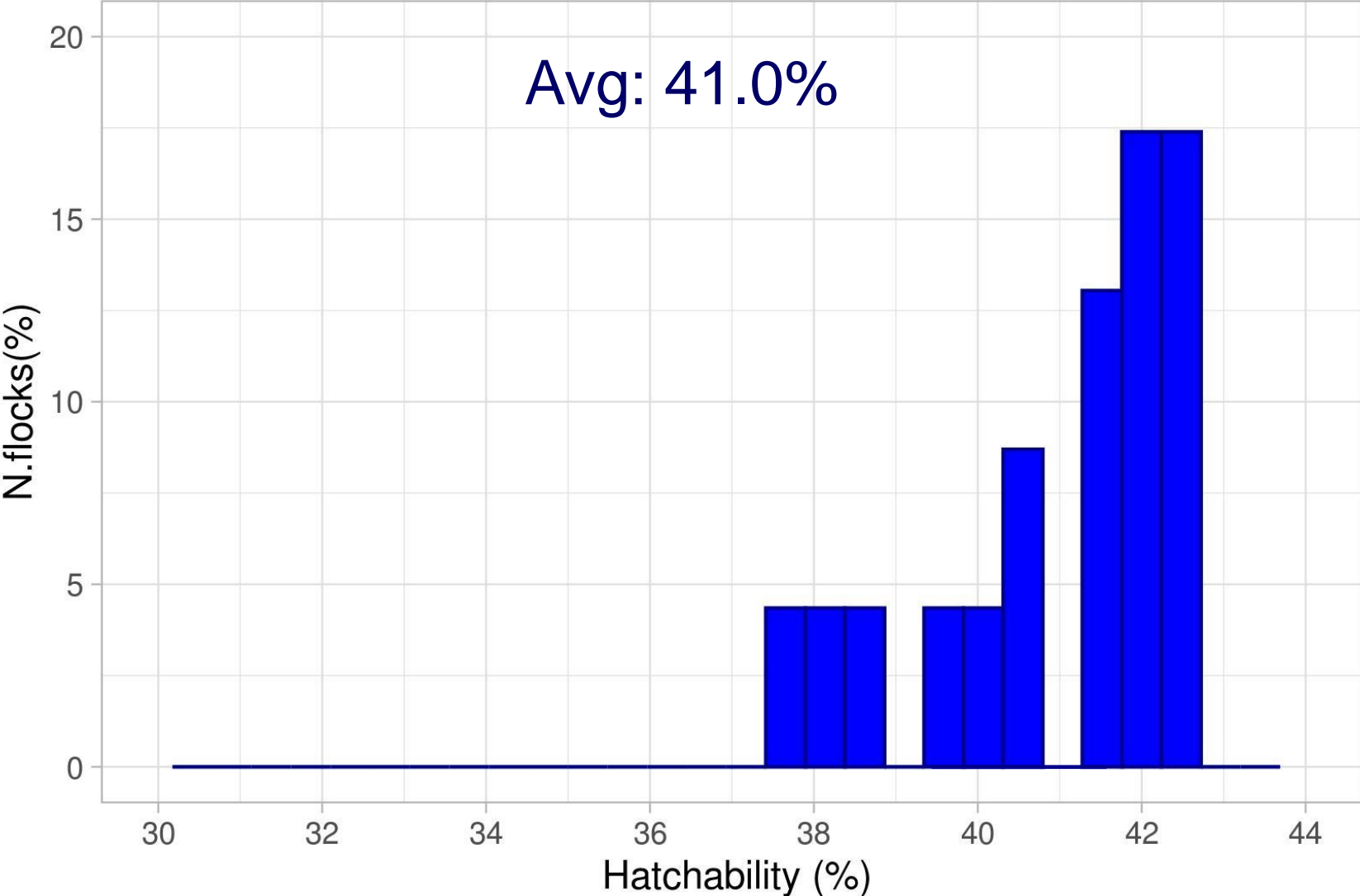
Liveability - **Brown PS**

Liveability by 70 weeks



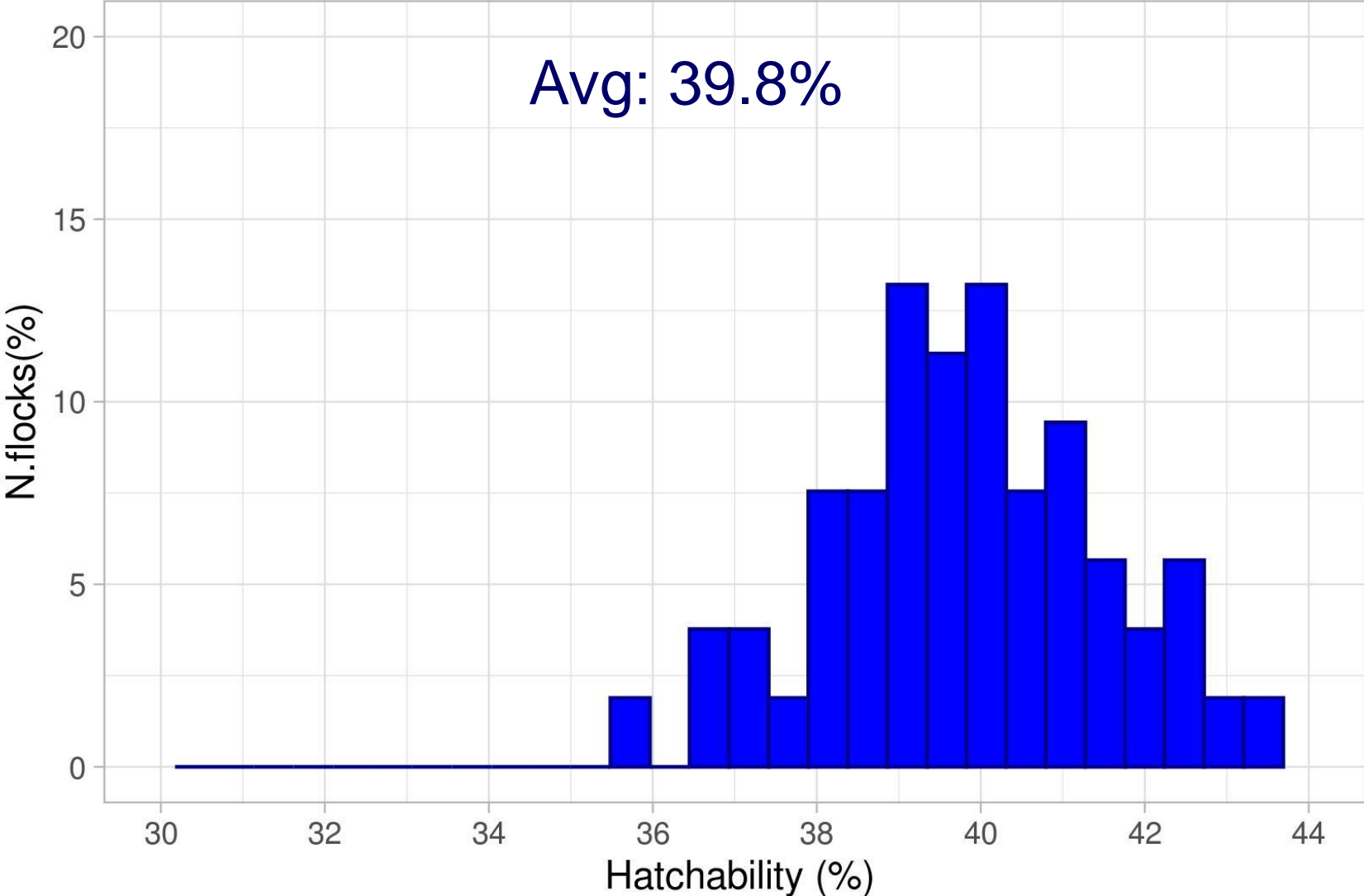
Average Hatchability - White PS

Hatchability by 70 weeks



Average Hatchability - **Brown PS**

Hatchability by 70 weeks



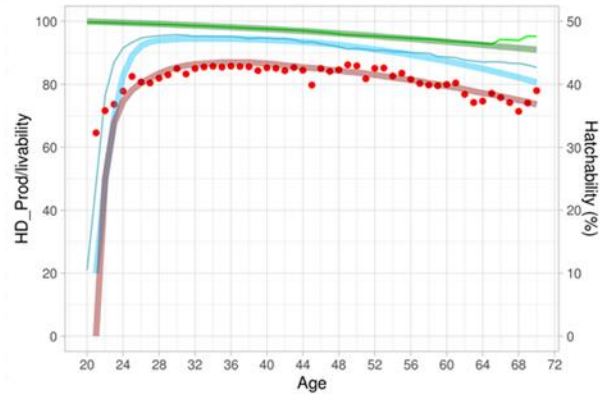
Report



Benchmark Report 2020/2021

Parent
Stock

Customer XYZ – White PS



Overview of the last flocks (Max. 10)

Hatch	Females	Rank 70w (from 125)	Eggs/HH at 60w	Dif. Avg at 60w	Eggs/HH at 70w	Dif. Avg at 70w
01/01/2019	50,840	1	268	+28	340	+30
01/06/2019	50,840	10	260	+20	325	+15
01/01/2020	50,840	58	245	+5	305	-5

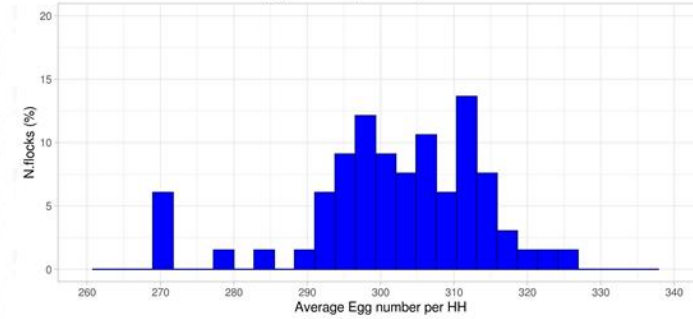


Benchmark Report 2020/2021 Parent Stock



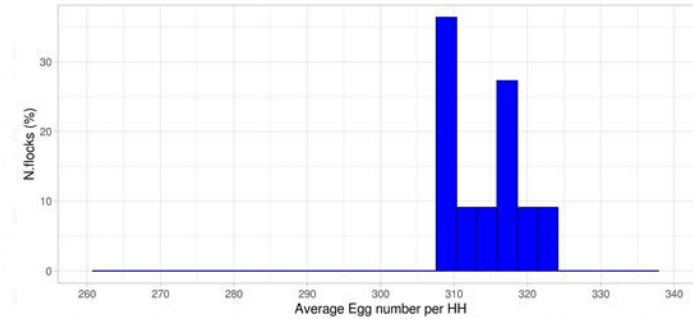
All

Egg number per HH by 70 weeks



Customer XYZ

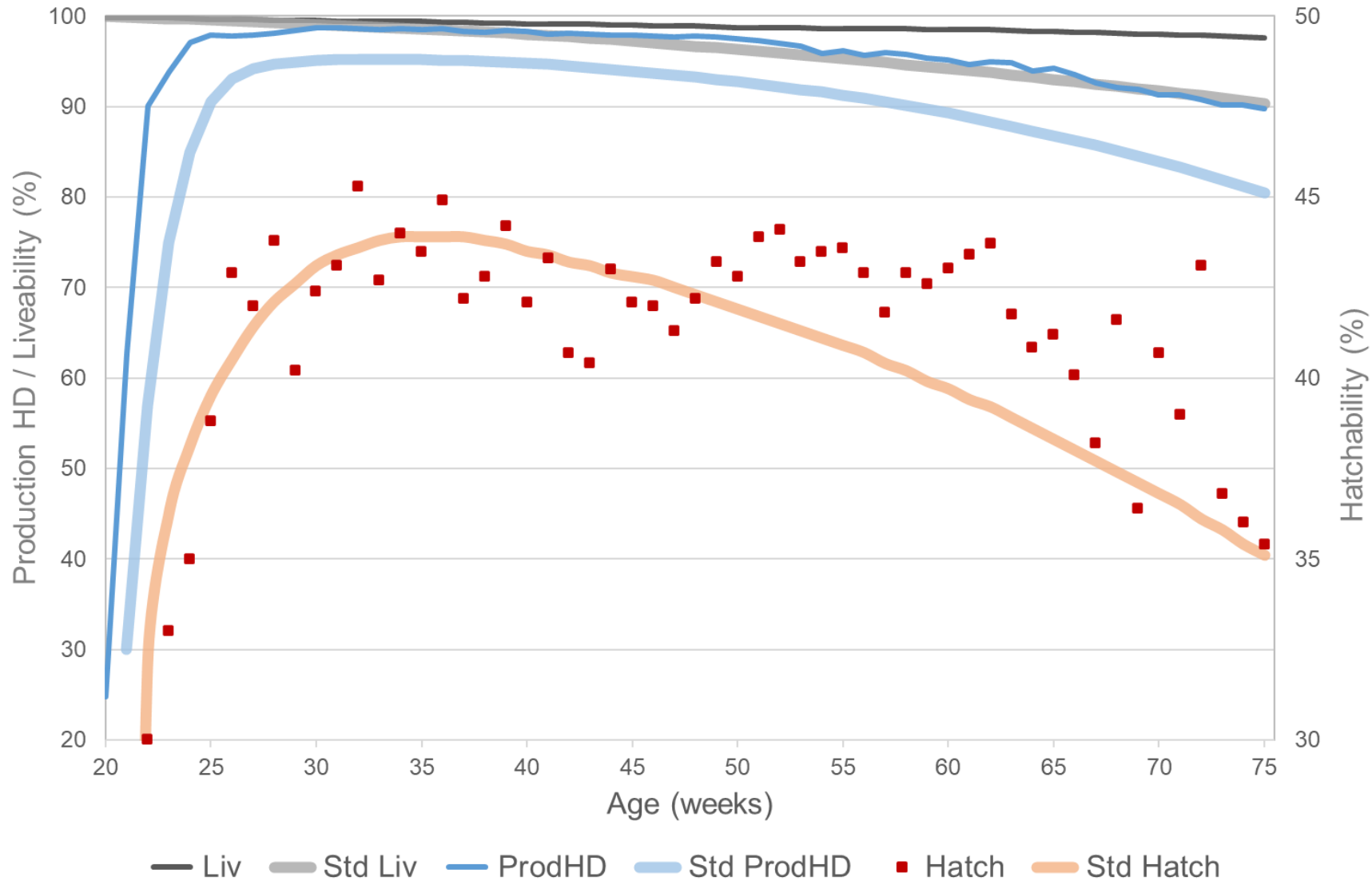
Egg number per HH by 70 weeks



Best PS-Flock 2021



Best Flock – Cabaña Barhy - 2019 Argentina 6,585 NC

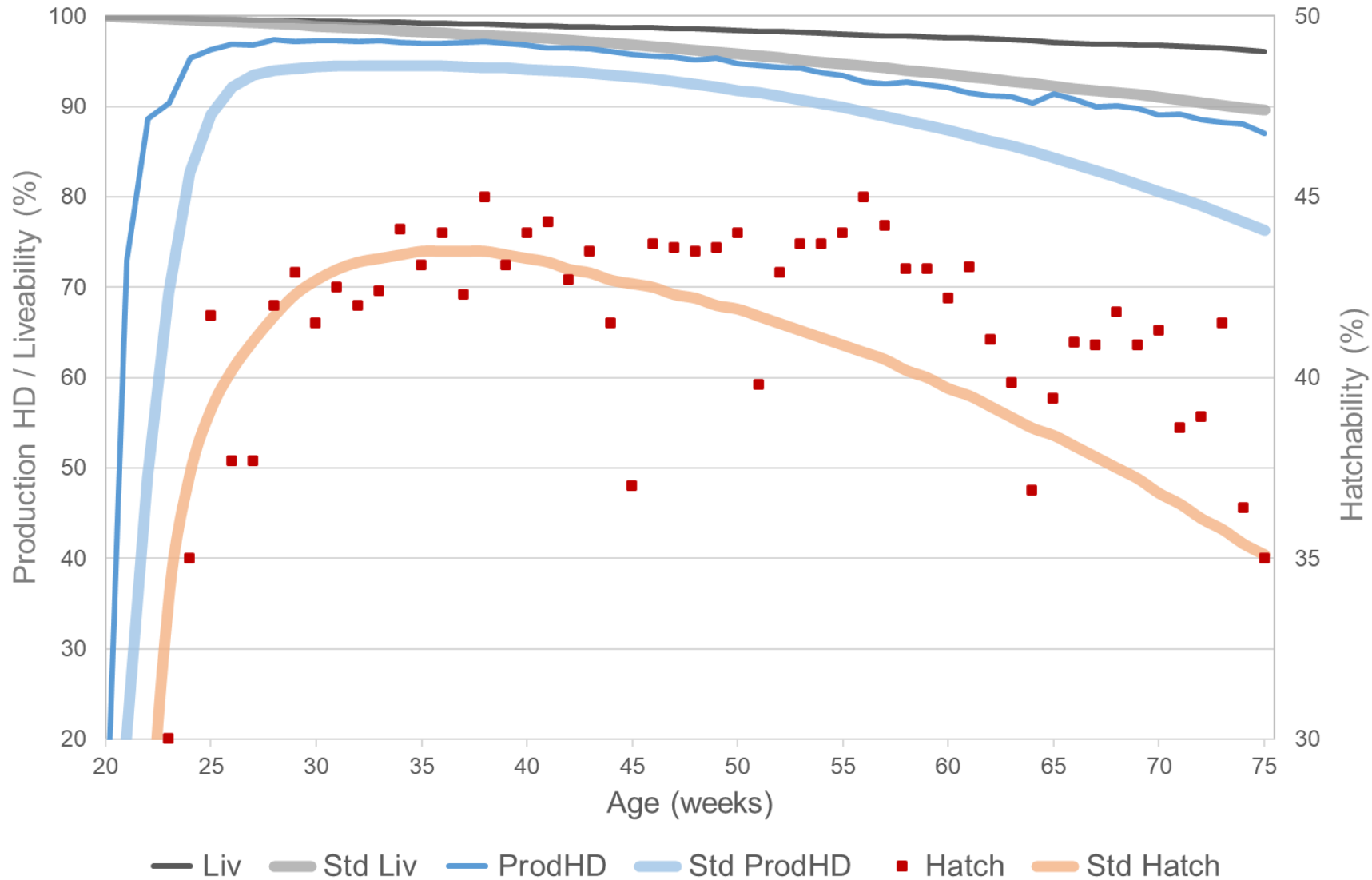


Trait	Flock	Std
EN/HH	365	329
Mort.	97.6	90.3
Hatch	41.4	40.5
DOC	143	122

Best PS-Flock 2021



Best Flock – Cabaña Barhy - 2019 Argentina 6,690 BN



Trait	Flock	Std
EN/HH	354	320
Livab.	96.1	89.6
Hatch	41.4	40.2
DOC	137	119

Conclusion

- Kick-Off: more extensive exchange of data!
- **Good PS-Performance is critical for your & our success**
- H&N Parent Stock Combined:
 - ✓ Excellent Number of Hatching Eggs/HH
 - ✓ Outstanding hatchability
 - ✓ **Maximum number of DOC**
 - ✓ A TS-Team always willing to support you!





**Thank you
for your
attention!**

**Follow us in our website
and on LinkedIn**

