



INTERNATIONAL

The key to your profit!

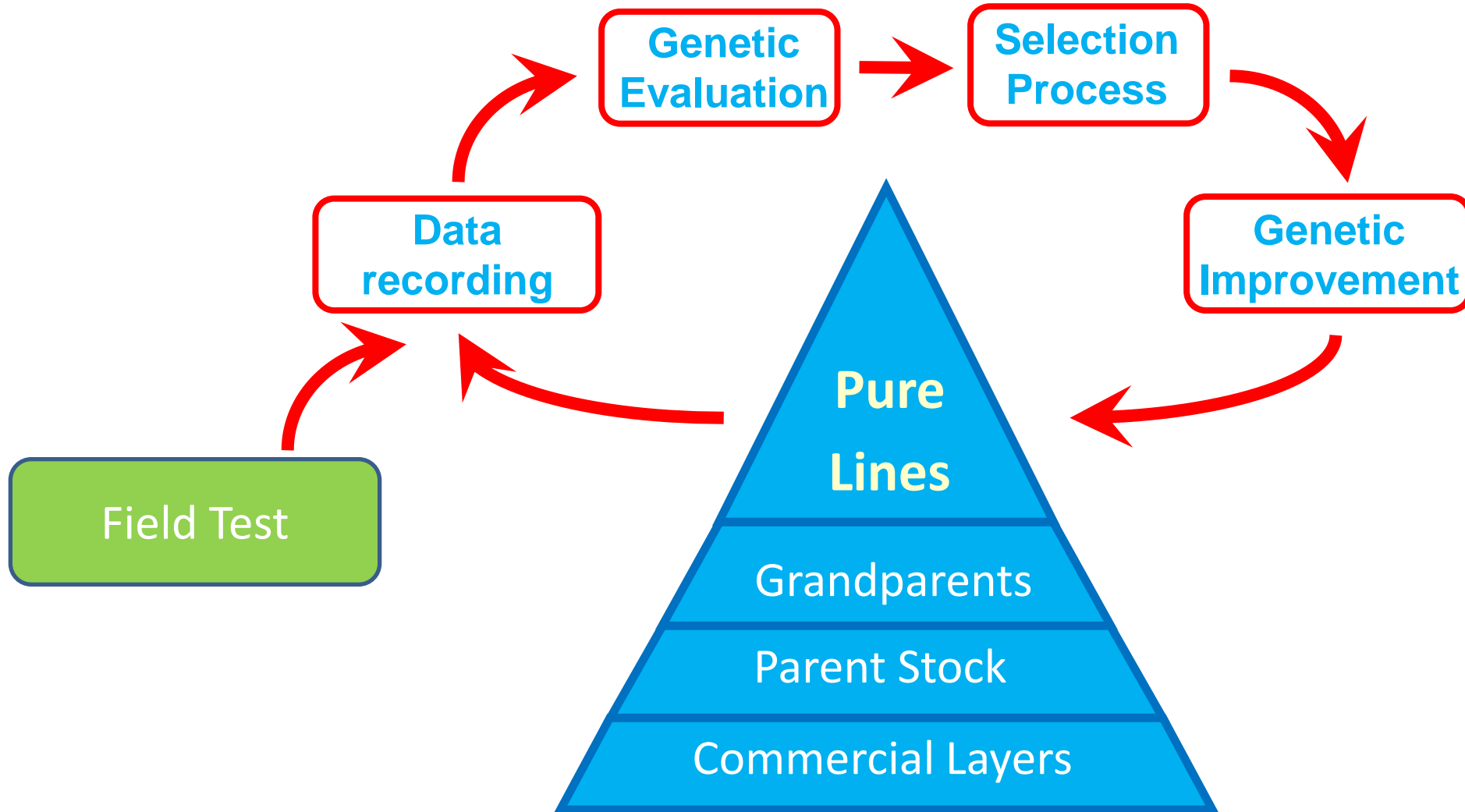


Nick Chick Outlook

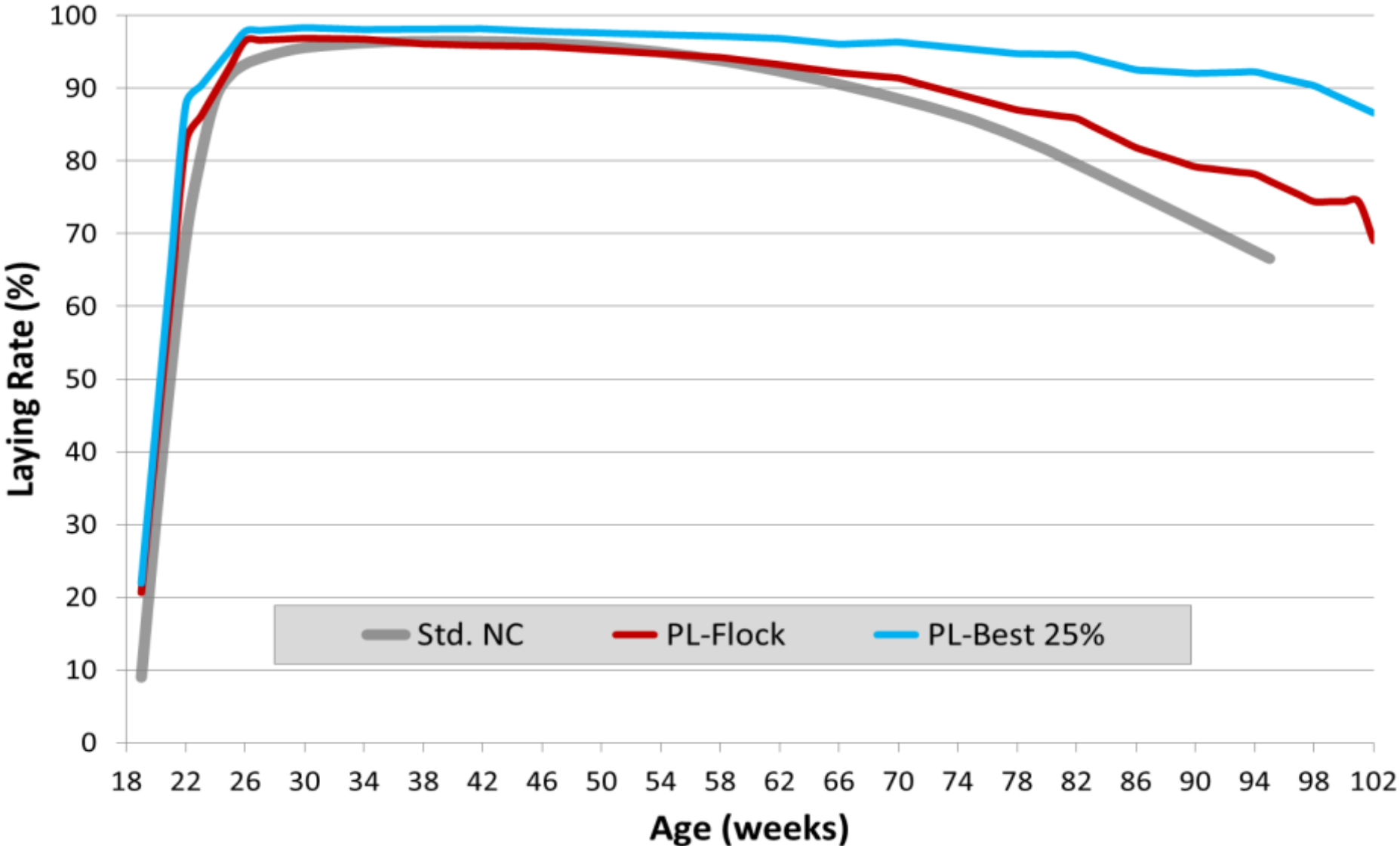
Dr. David Caverro Pintado

H&N Layer Academy North America – 21st September 2021

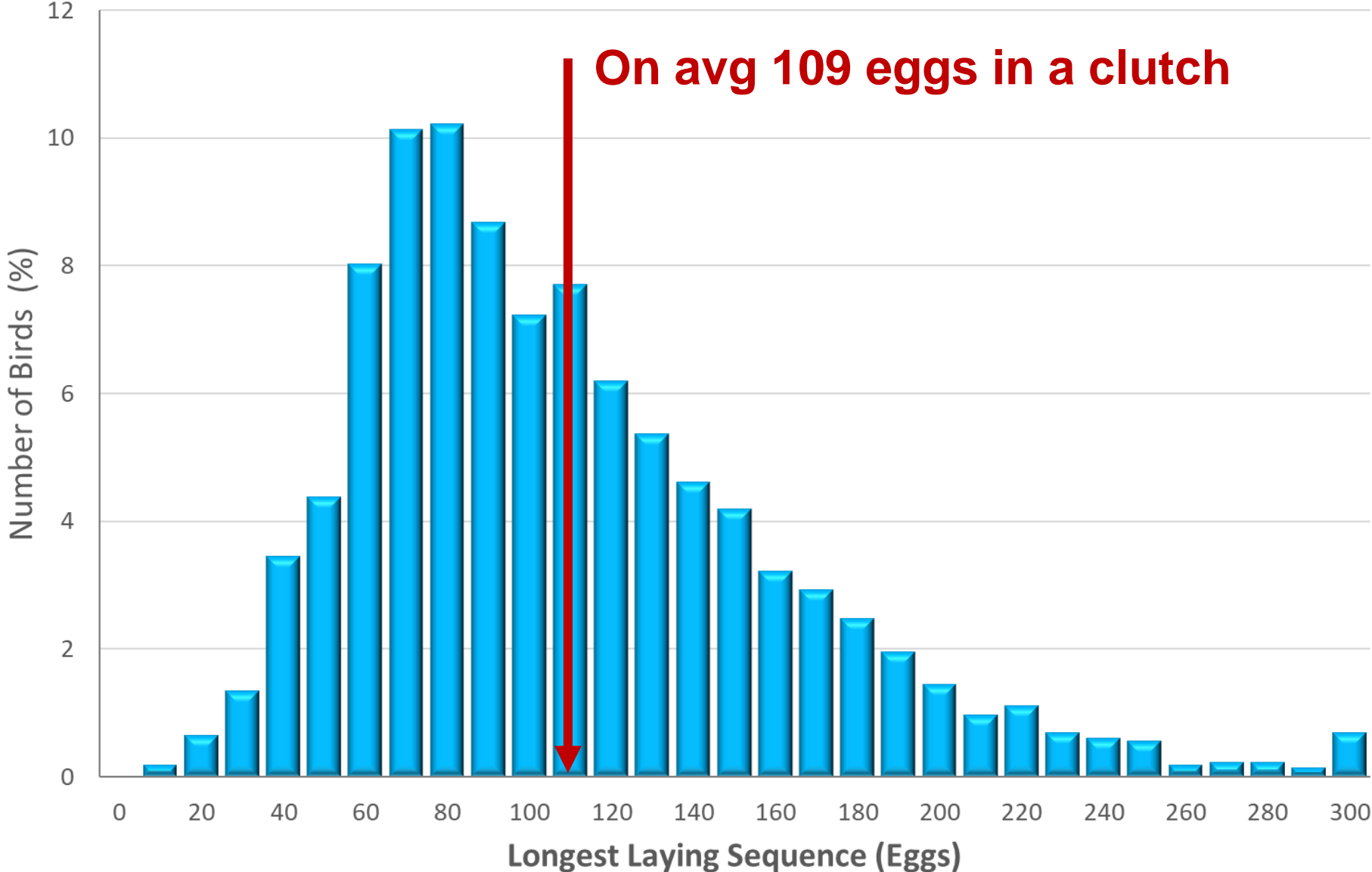
Structure of the Laying Breeding



White Pure Line – 102 weeks



White Pure Line – Clutch length

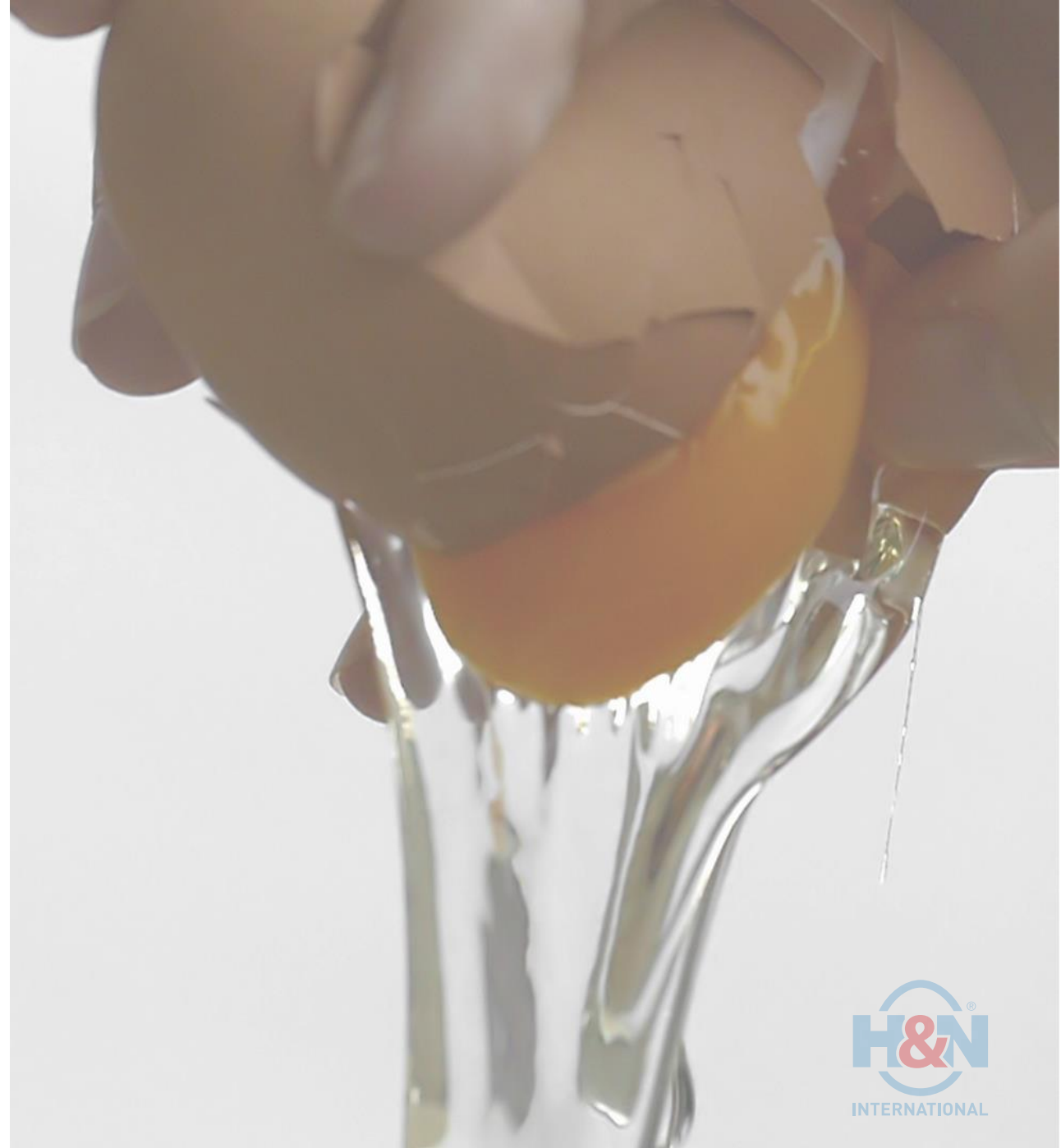


Breaking the egg

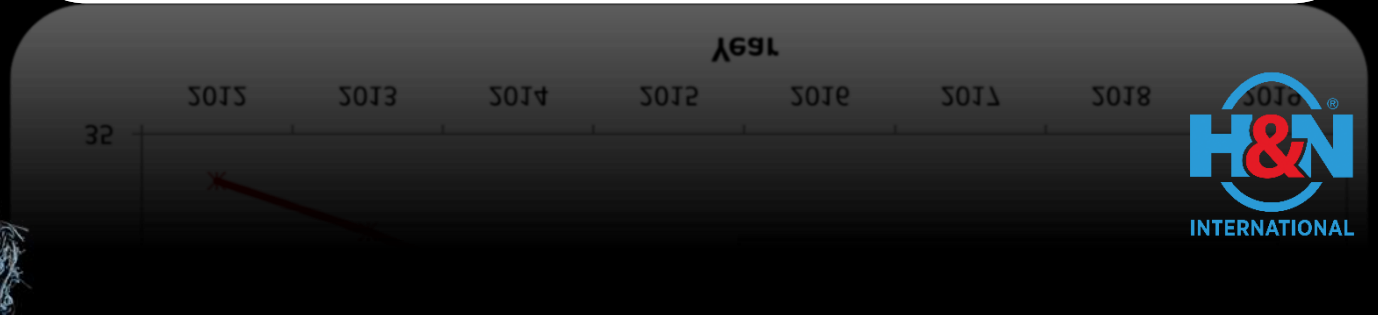
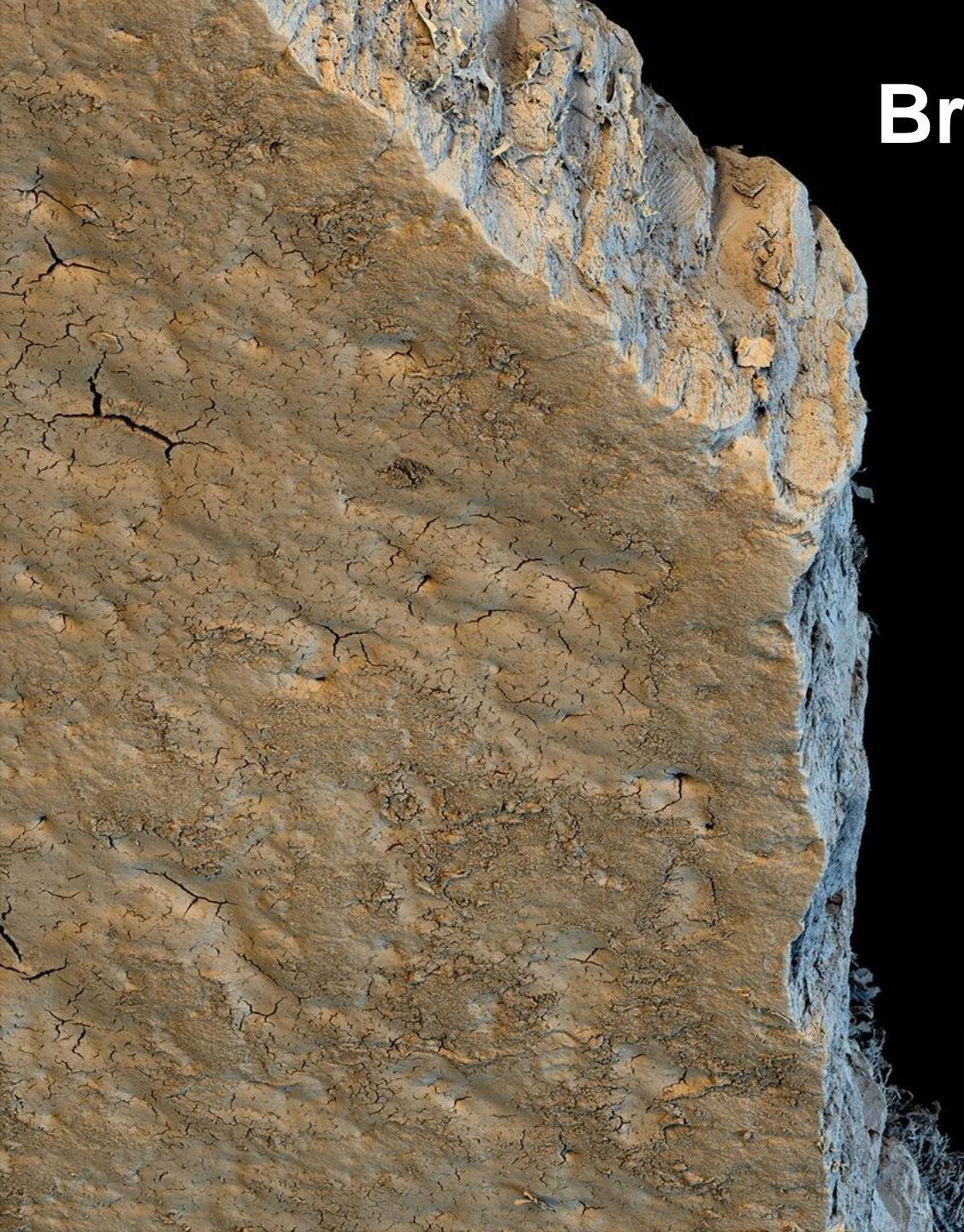
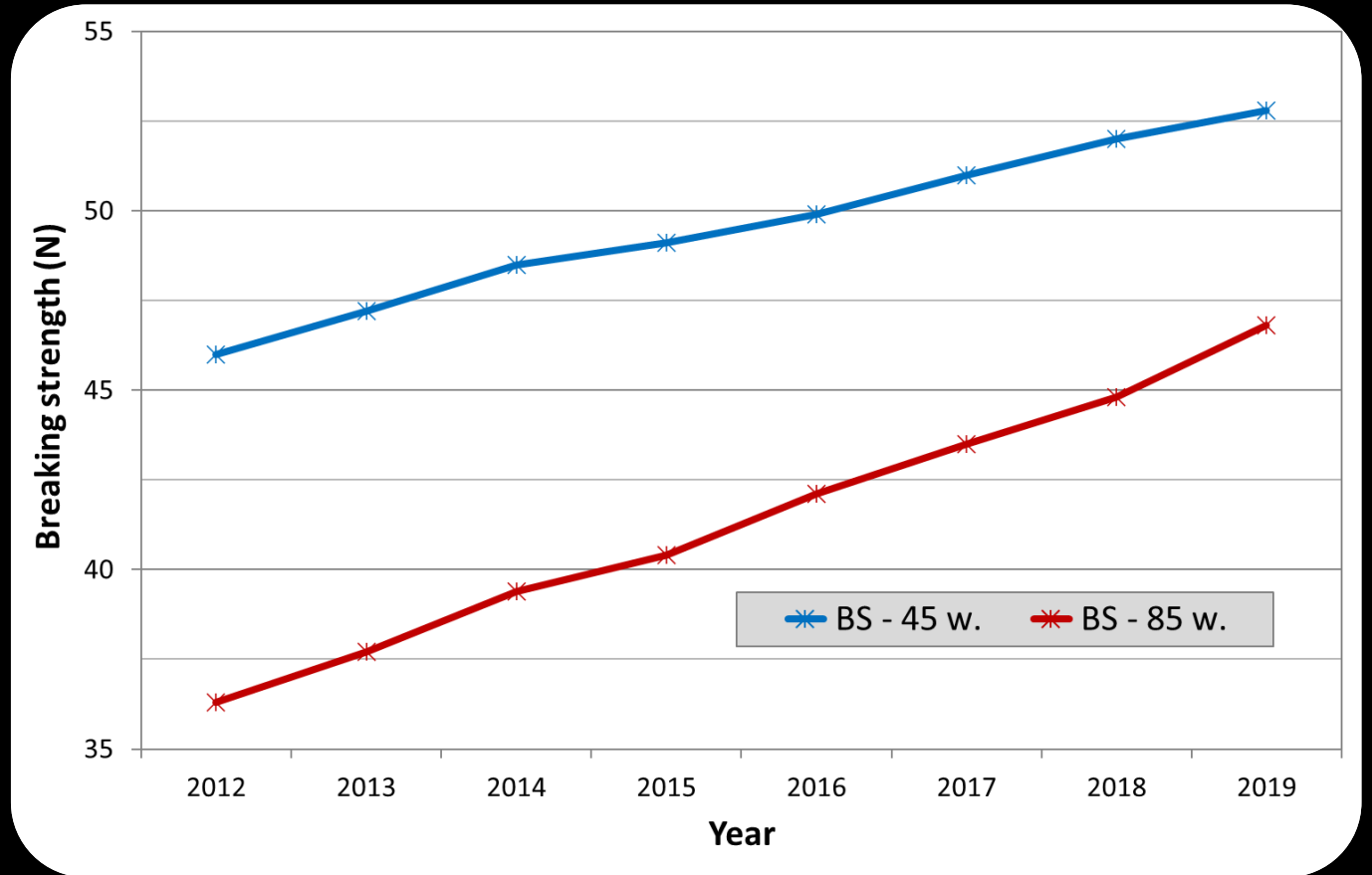
*H&N eggs only break at the
right time!*

Selecting for a better eggshell:

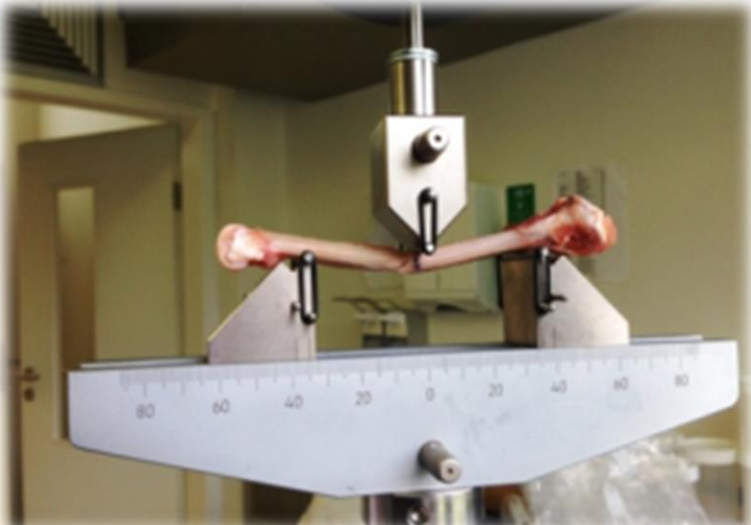
- ✓ Reduce waste
- ✓ Decrease contamination risk
- ✓ Extend flock production life



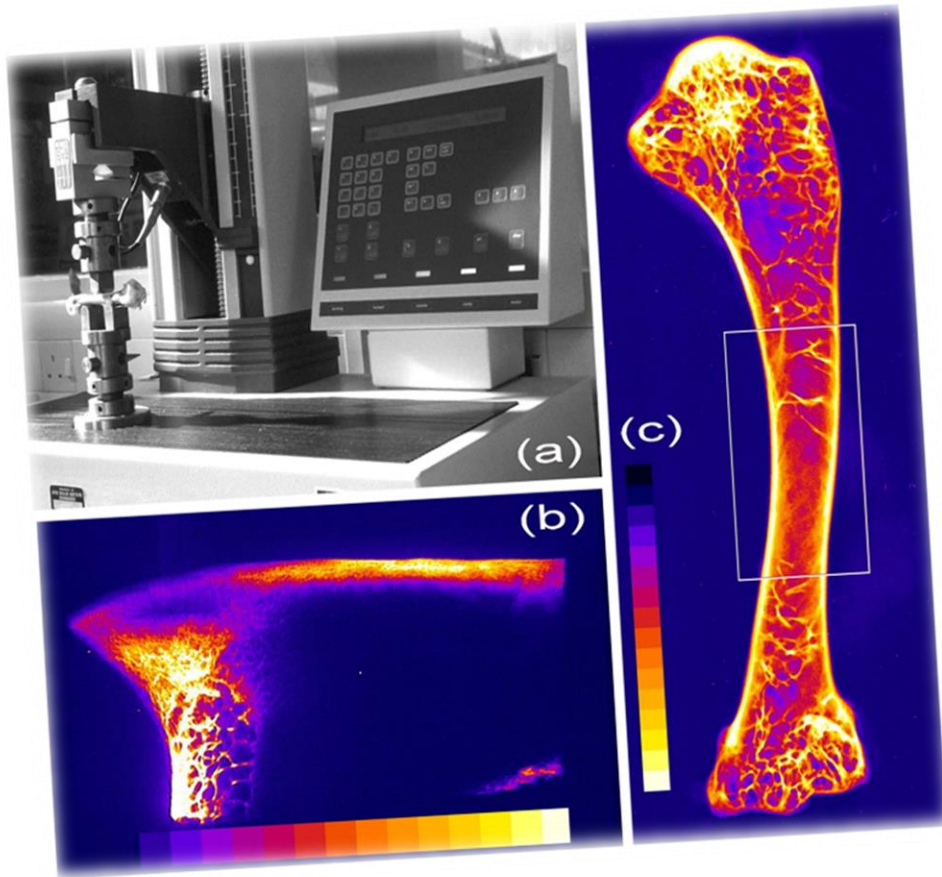
Breaking Strength



Improve Bone Stability



Bone Quality



Post-mortem Bone Quality

- ✓ No neg. correlation with persistency ($r_g=+0.25$)
- ✓ No link to BS ($r_g=\pm 0.1$)
- ✓ Neg. correlation with early maturity ($r_g=-0.73$)
- ✓ Well-mineralised medullary bone is important for skeleton quality
- ✓ Keel bone is hard to measure and $h^2=0.03$

(Source: Dunn et al., 2021)

Rearing: An investment for the future

Not only Costs! - The key to success!

Body Weight Development & Uniformity

Good
Immune
System



Feed Intake
Capacity

Egg Weight



Influencing Factors:

- Light stimulation, Body Weight, Feed
- Genetic – $h^2 \sim 0.6$



Goals:

- Max. N. eggs in desired class
- Fast EW increase at the beginning
- Flat EW curve after 60 weeks

Selection for better feed efficiency



- **Sufficient feed intake at greatest nutrient demand**
- Focus is not only in FCR, but mainly in IOFC
- **No special high-density diet – Flexible in raw material**
- Feed intake according to production

Better feather cover & behavior

Selection for low mortality and good feather cover



Adaptability to different environments



Field Test - Performance recording



Birds tested in several continents

- ✓ Egg Production
- ✓ Egg Quality
- ✓ Livability
- ✓ Plumage Condition
- ✓ Pecking

Breeding for cage-free - Floor Testing

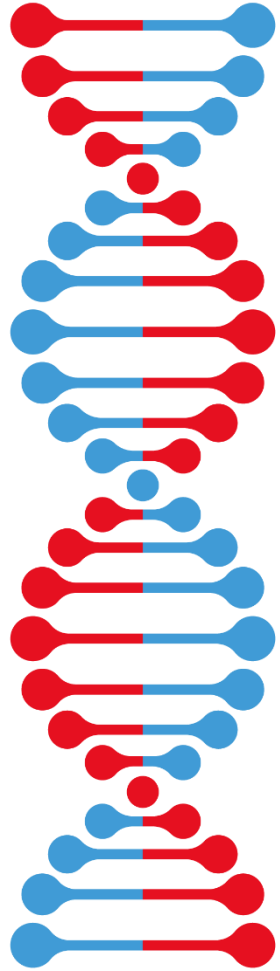
Less floor eggs



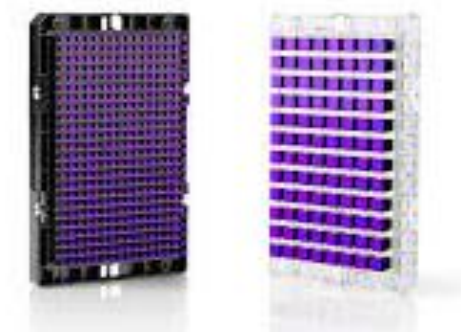
Manual Trap Nest in Russia



Genomic Selection



DNA Analysis



Axiom® 384/96 Format (Affymetrix)

- MD 50k SNP-Array
- Better use of genetic variation
- By-product: Pedigree check
- **Higher genetic progress in layers**

New Traits - Artificial Intelligence



- Automatic data collection
- **Transform data to information:**
 - ✓ Tracking the animal
 - ✓ Activity
 - ✓ Behaviour
 - ✓ Fitness

Nick Chick – the versatile prolific white bird

Definition

- Max n. saleable large eggs with adequate feed intake

Strength

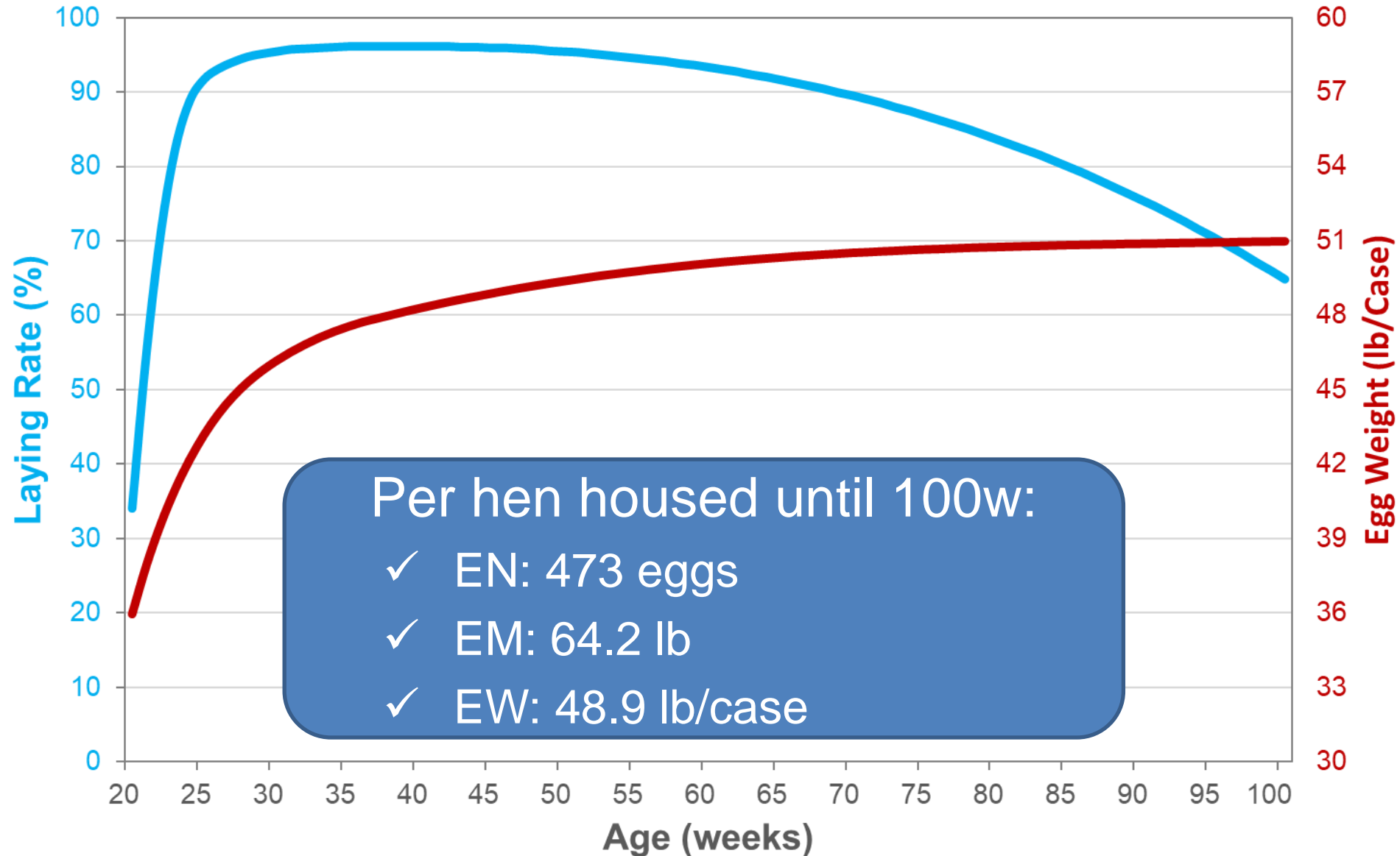
- Outstanding eggshell quality & long laying cycles
- Early optimum egg size and flat EW curve later
- Good behavior and excellent adaptability

Footprint

- In 17 Countries
- Biggest Markets: USA, Turkey, Brazil, Netherlands, Iran & Canada

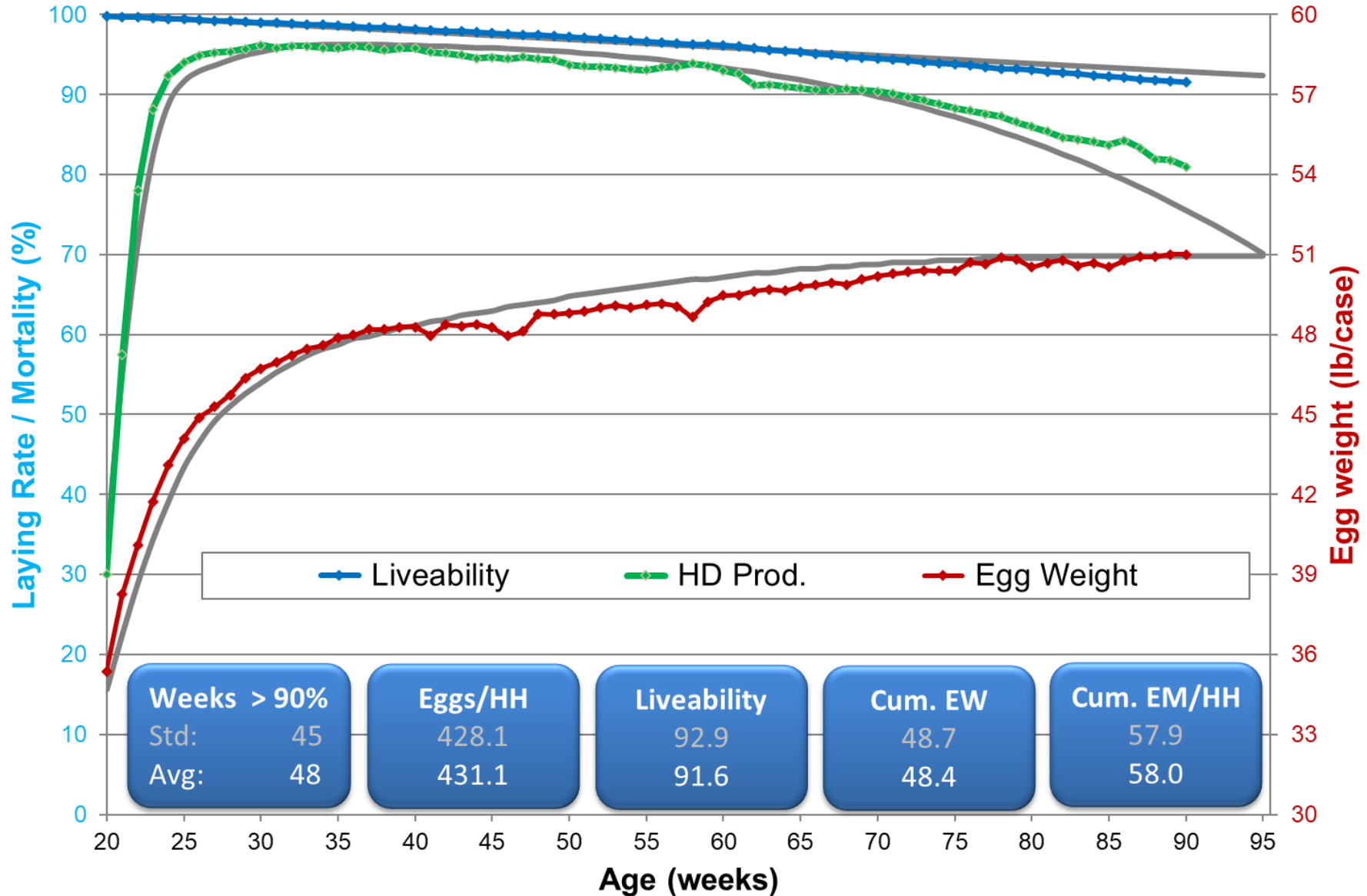


Nick Chick – Standard Production Data

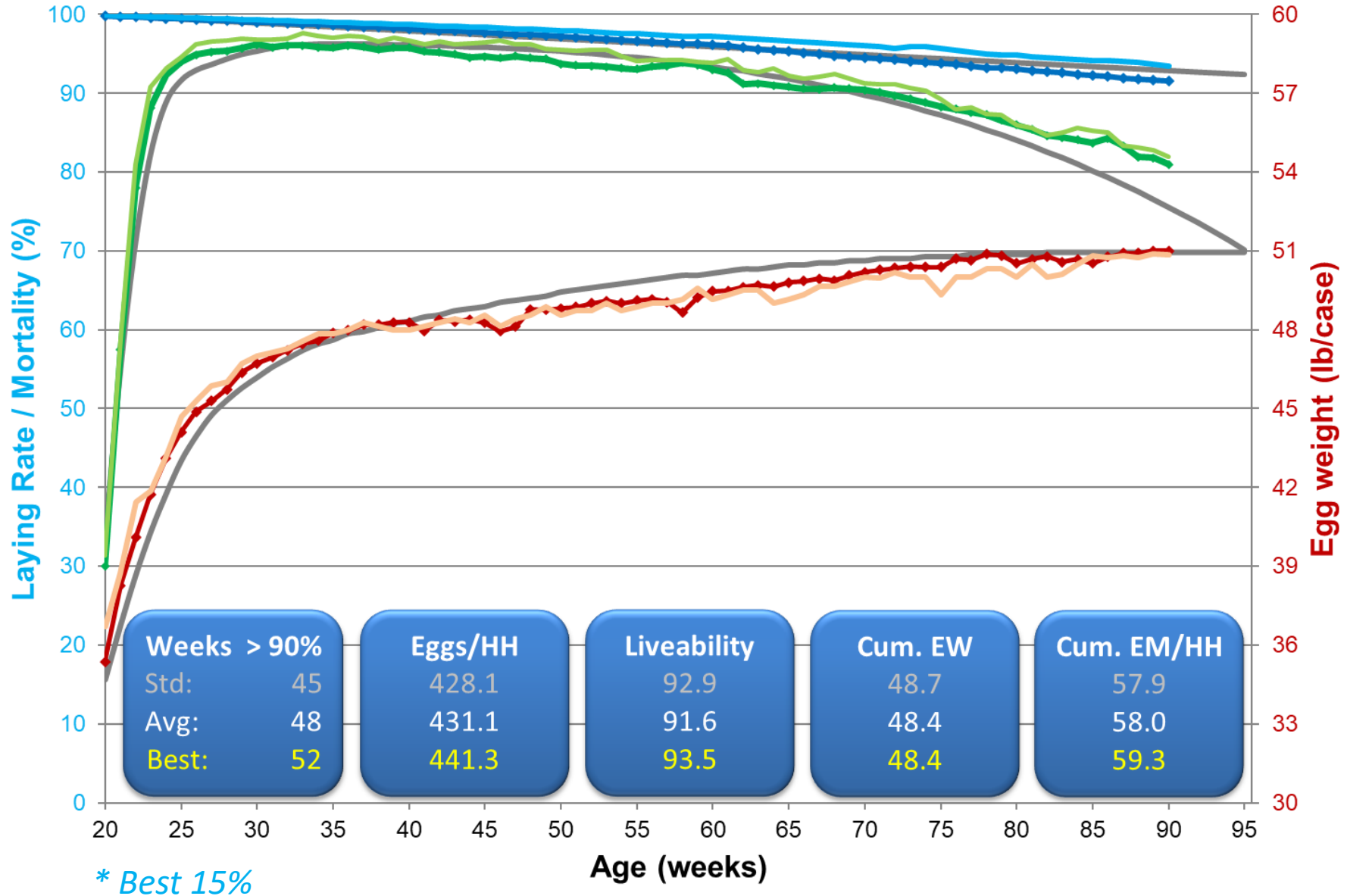


www.hn-int.com

Nick Chick in USA – 152 flocks (2016-2020) ~ 15.5 Mill.



Nick Chick in USA – 152 flocks (2016-2020) ~ 15.5 Mill.



A space-themed background featuring a large, bright, cratered planet on the left side. The rest of the image is a dark, starry space filled with a trail of golden-brown dust or debris that curves across the middle. There are some blue and purple light streaks in the background.

Thank you for your attention!

Follow us in our website and on LinkedIn