

INTERNATIONAL

The key to your profit!



Feed Management in Parent Stock and Layers

Leon Schouren

Global technical service

What is the reason to apply good feed management on the farm?

- Target to feed **ALL** the birds the same quantity, and in this quantity the **COMPLETELY** balanced feed.
- To prevent restricted feeding
- To prevent that we spill and waste feed.

Feed Management

Stack Feeding

(Example for Cage Housing with 3 Feeding Periods)



Feed Management

Why do we need to train our ps/layers to empty the feeders ones per day:

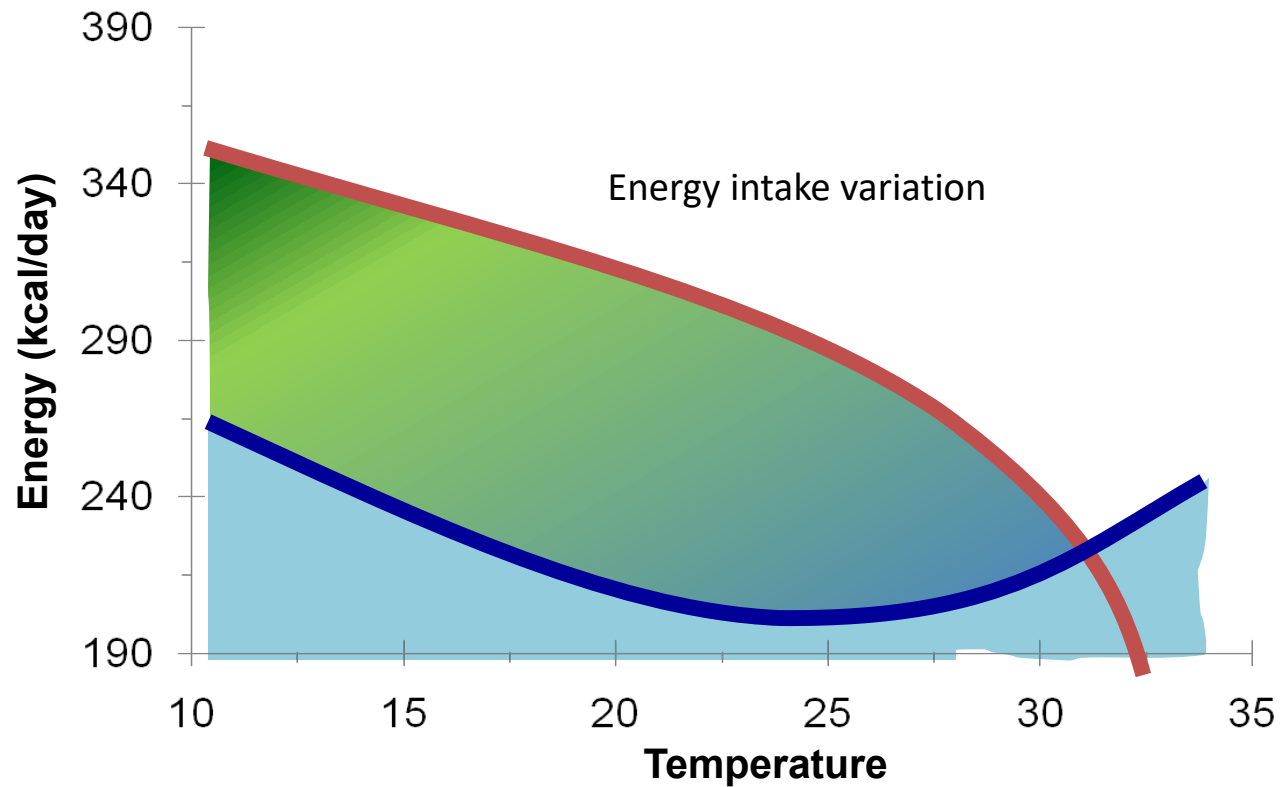
- To prepare the birds for the big step in feed intake at the start of production.
- To keep up feeding in hot climate areas
- To reduce select feed intake

Feed Management

Prepare the birds for higher feed intake

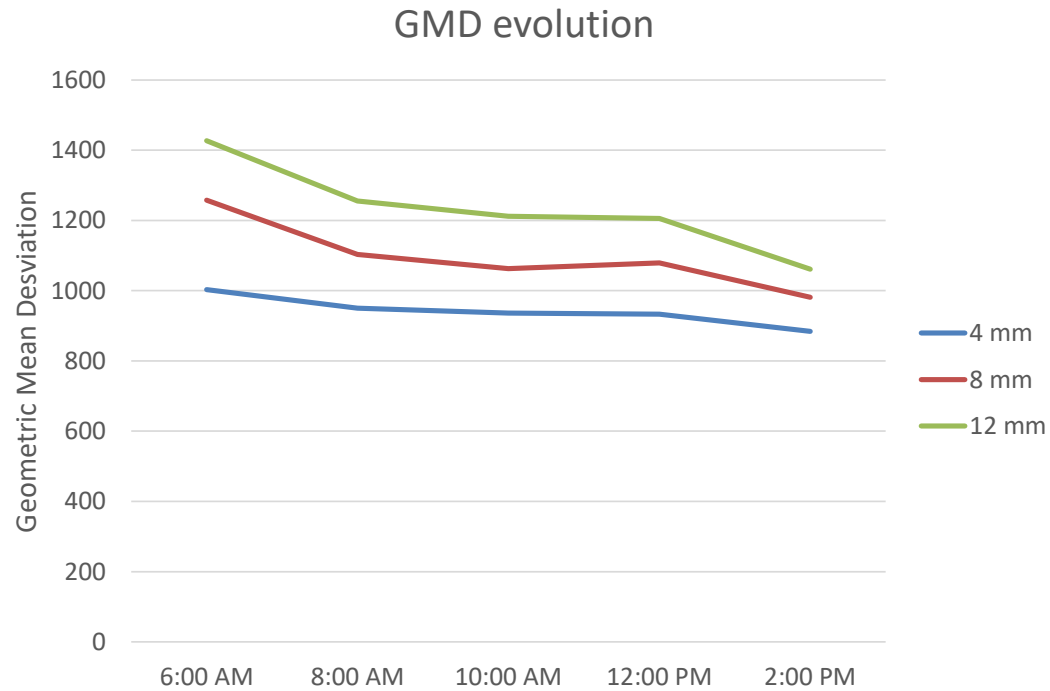
- We help our ps/layers to increase their feed intake with a big step from the age of 16 weeks
- That means from 60-70 grams at 16 weeks, to 115 grams in start of production
- And we change feed from rearing to production (other feed, feed company, feed structure..)

Feeding in hot climate areas



Adapted from Leeson (2012)

Reducing select feed intake.



Adapted from Herrera et al Poultry Science 97, 2018

Easy testing on farm level



Source: H&N International

Easy testing on farm level



Source: H&N International

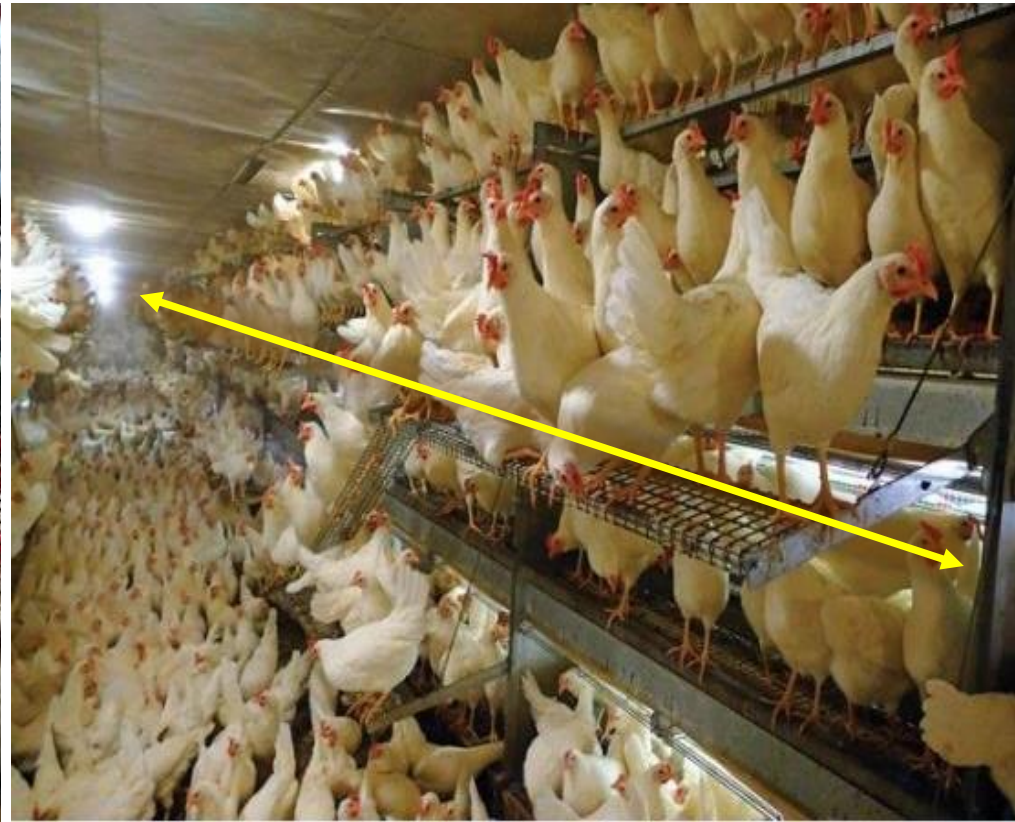


New challenges in cage-free

Does it work in ps/commercial
rearing/layer

farms, long feed chains &
high stocking densities ?

New challenges in cage-free



Source: H&N Int.

New challenges cage-free/organic



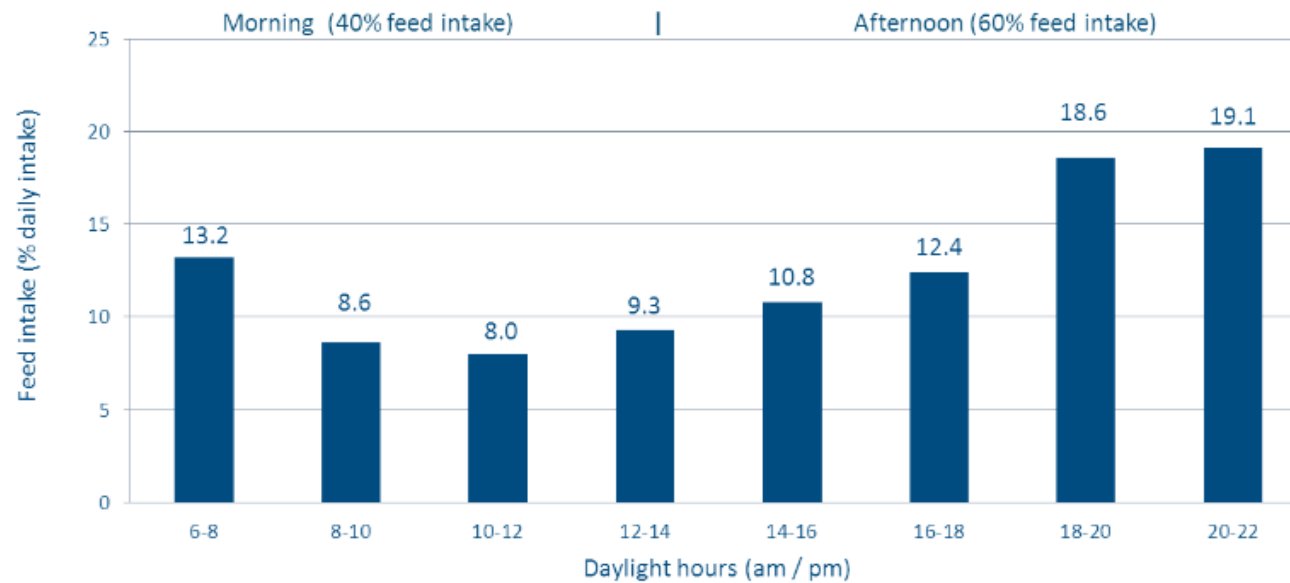
Source: H&N Int

Free Range/Organic

- What are the birds eating and drinking outside the barn?
(Free-Range/Organic)
- Can we give the birds the complete breakfast before we let them out of the barn?

Governments, retailers, animale welfare organisations limit the time inside the Barn

How the birds eat during the day



Adapted from Keshavarz, 1998)

New challenges



IR-treatment

Source: H&N Int



Untrimmed

New challenges



Source: H&N Int

Feed structure – judged by a hen



☹️ I don't like hard and sharp granulate

☹️ I don't like fine powder mashfeed

☹️ I don't like hard pallets ...

Source: R. Pottgüter

Feed Structure



Source: R. Pottgüter

**Homogenous
mash feed structure
the basis
for good & even feed
and nutrient intake**

What are they going to eat?



Source: R. Pottgüter

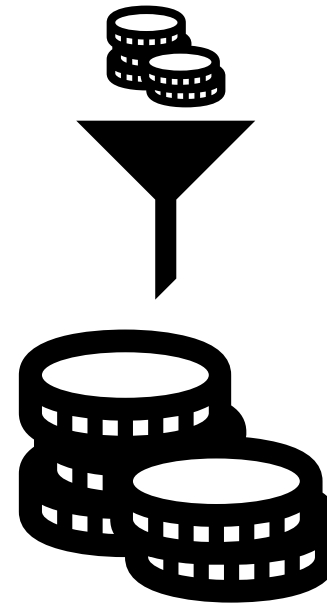
When feeders are FULL all day!



Source: H&N Int

Invest into the right feeding system - and profit from it

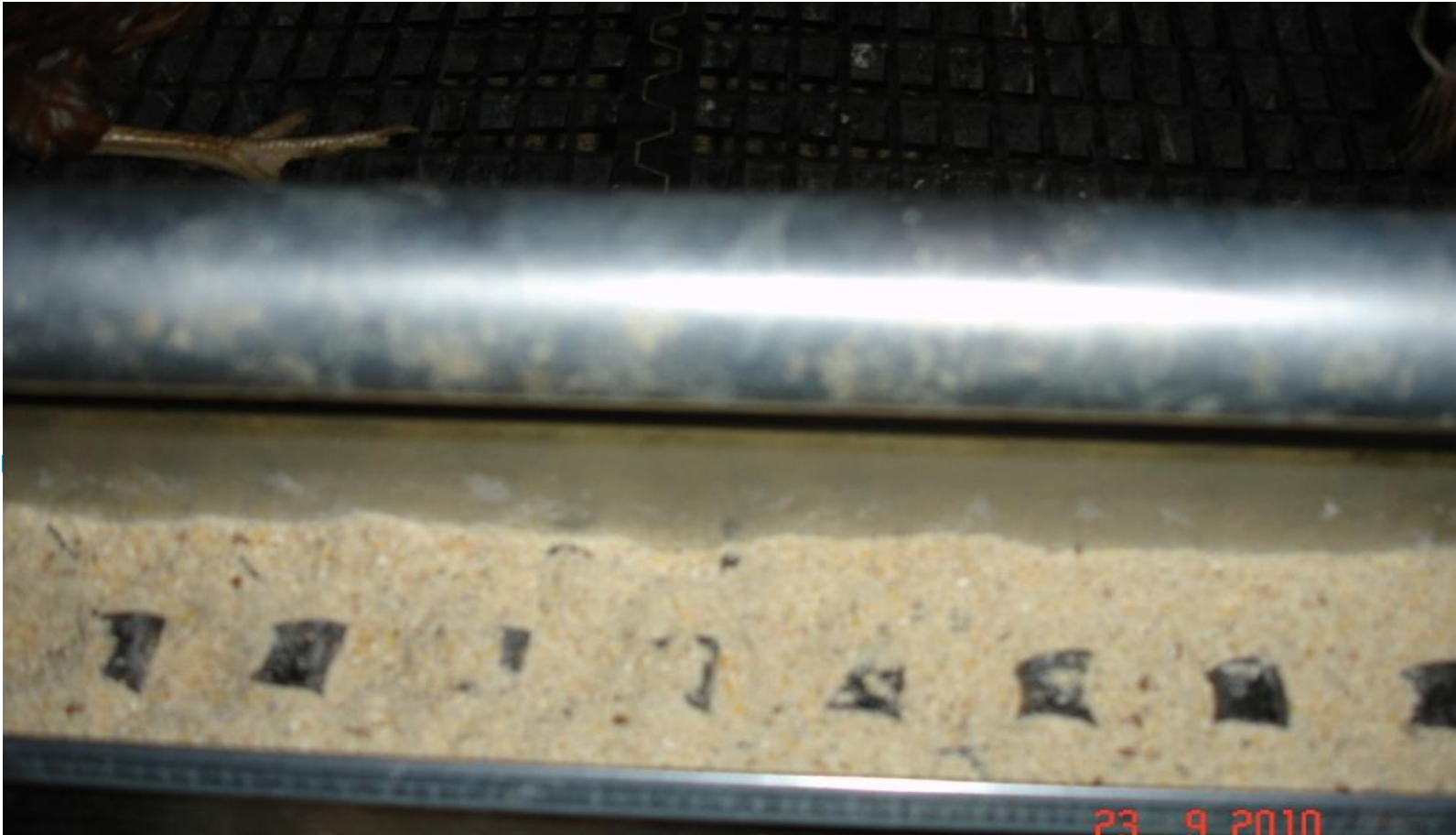
- a feed chain
 - Better: A feed chain at fast space (>18 M/Min)
 - flat bottom silos
 - big transport augers
 - or big feed hoppers
-
- ✓ Profit from less to no waste
 - ✓ Better feeding behaviour



When to start feed management?

- Best time is in rearing on a age of 3-4 weeks
- Start to empty the feeders first one or two times a week.
(Keep an eye on behaviour of the flock)
- From 6 weeks of age, we let them empty the feeders ones every day.
- **Continue this also after transfer to production!**

Empty the feeders once per day!



Source: H&N Int.

Empty the feeders once per day!!



Source: H&N Int



5 step check

- Litter
- Federcover
- Section
- Behaviour
- Bodyweight

Litter

On the
litter



Source: H&N Int

Federcover

On the Bird

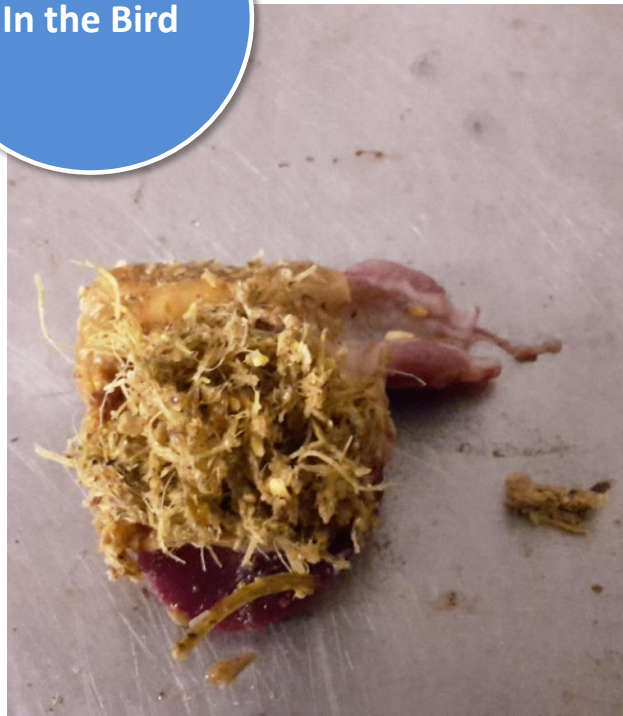


Source: H&N Int



Section

In the Bird



Source: H&N Int

Behaviour



Source: H&N Int

Where and when to check bodyweight!!

Bodyweight



Source: Big-Dutchman

Alfalfa



Source: H&N Int.

- Do we need to use Alfalfa?
- For what purpose do we need to use Alfalfa?
- When do we need to use Alfalfa?

Alfalfa - When and how to use it and when not

- We don't use alfalfa to feed our birds!
- We use alfalfa only to give us some extra hints to see if everything is in good balance:
- **When birds don't take alfalfa, they are in good balance.**
- Advisable to use it during most stressfull periods:
 - In rearing 3-10 weeks
 - In production 17-25 weeks



Source: H&N Int.

Alfalfa (Luzerne)



Source: Farm Terhorst

Mandatory Steps

- **From week 4** in rearing start to train the chicks to empty to feeding troughs 2-3 times a week.
- **From week 5-6** empty the feeding troughs every day.
- Continue this training after transfer in production!



To-Dos

- Good feed and feed management
- Observe the birds and they will “tell you”
- Rearing is the key to success

Please be excellent because ...

... an excellent manager will still be able to perform with acceptable results even when circumstances are not perfect

But ...

A manager with poor skills will spoil the birds and the production results even in the best circumstances!

Thank you for your attention!
Your Questions, please!

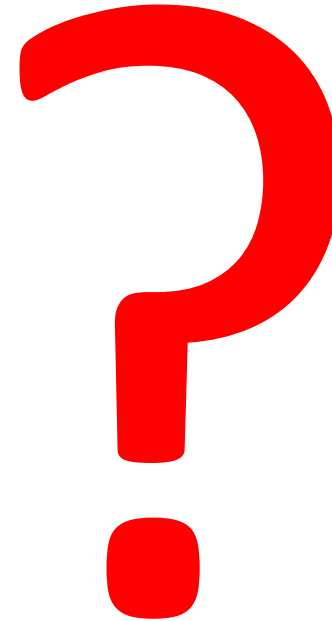


Source: H&N Int.



How much feed does a layer eat in the second part of the day?

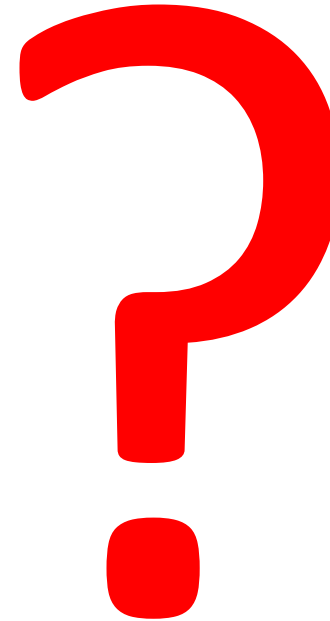
- 60% of the total amount
- 40% of the total amount
- 70% of the total amount



Do we prefer a slow running feed chain?

➤ Yes

➤ No



How long do we tolerate an empty feeder?

- 30 Minutes
- 60 Minute
- 1 Minute

